



Beyond Engineering Solutions

The starting point for
your sustainable future

 *Delivering with Pride*





EPC

- Engineering
- Procurement
- Construction



Engineering

- Project Management
- Fieldwork Investigation
- Mine Geotechnical Study
- Civil & Infrastructure Study
- Water Management & Engineering Study



Logistic Solution

- Cargo Services
- Warehouse Management
- General Trading



Mining Services

- Overburden Removal
- Coal/Ore Getting
- Hauling
- Land Reclamation



Integrity

Integrity forms the foundation of our operations in engineering and construction.



Quality

Quality remains at the forefront of our engineering and construction services.



People

Our employees are at the heart of our success in engineering and construction.



Sustainability

Sustainability guides the way we approach engineering and construction projects.



Health, Safety and Environmental



Given the company's involvement in complex engineering projects, ensuring the well-being of employees, contractors, and the environment is of utmost importance.

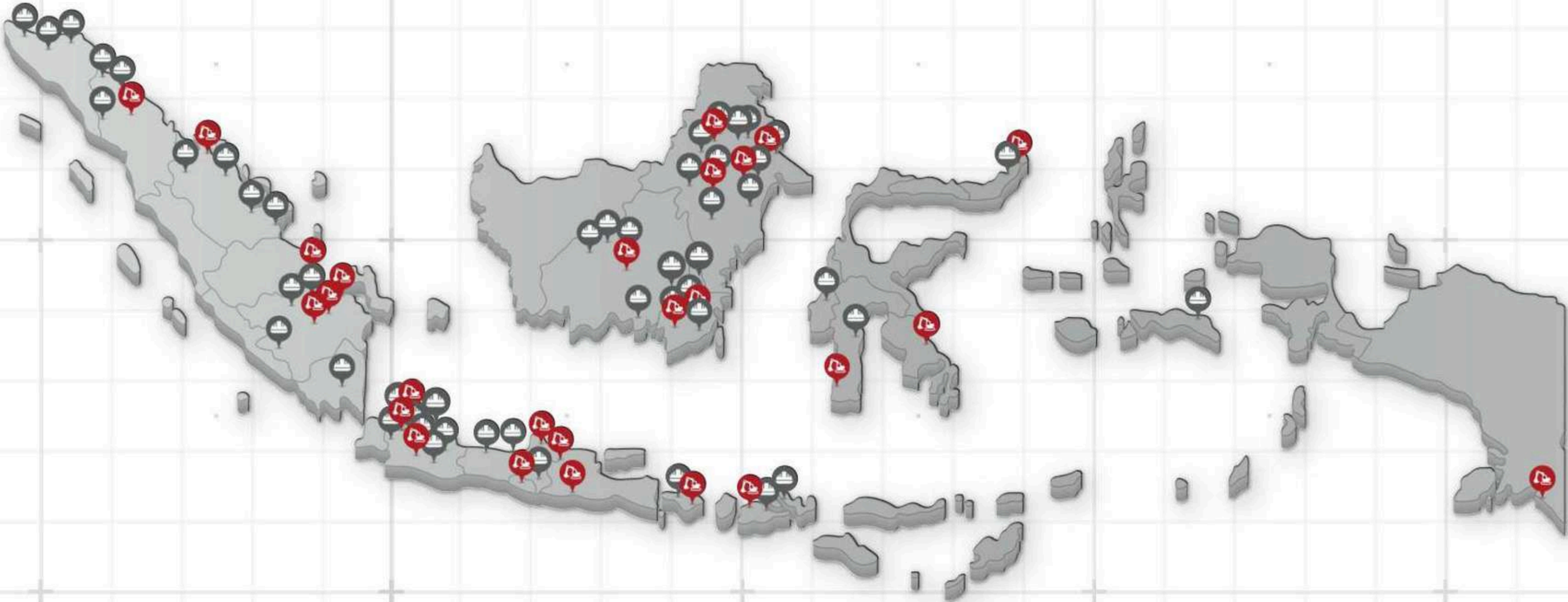
Core Values of TMU

Our core values drive **our innovative engineering** and **high-quality construction services**. They inspire us to uphold integrity, prioritize health and safety, empower our people, and support sustainable development in every project. By embracing these values, we create

lasting value for our clients, stakeholders, and the environment, strengthening the reputation of our engineering and construction company.

Our Portfolio In Indonesia

-  Engineering project locations
-  Construction project locations



Our Clients

> Mining



Our Clients

> Oil & Gas



> Renewable Energy



> Electricity, Telecommunication & Infrastructure

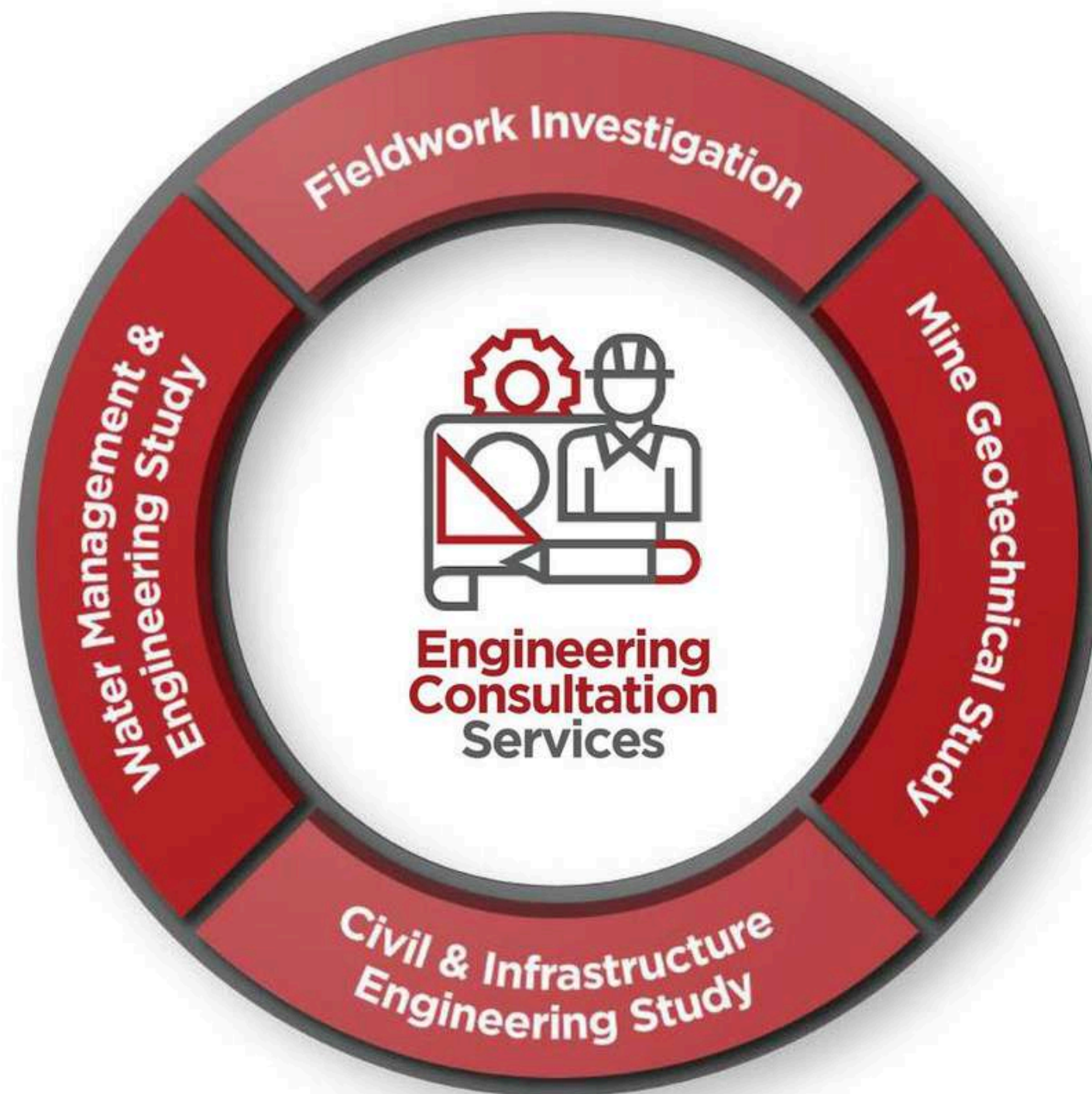


> Manufacture





Our Portfolio

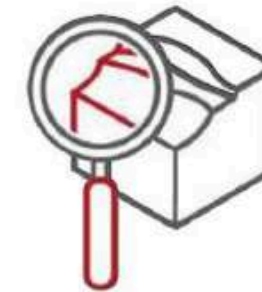


Our Engineering Service Offerings



Fieldwork Investigation

To support landscaping plans, certain stages require an inventory of on-site data.



Mine Geotechnical Study

A senior geotechnical engineer conducted the advanced stage following the results of the fieldwork investigation, which was subsequently reviewed by a geotechnical expert.



Civil & Infrastructure Engineering Study

Conduct studies that cover a wide range of issues, including architecture, building structures, road pavement, bridges, culverts, port and jetty facilities, coal handling facilities, and mine camp facilities.



Water Management & Engineering Study

Reports on hydrological and hydrogeological investigations, as well as surface water management, are examples of the types of investigative papers we provide.

Engineering Project

Project Capability — Hauling Road Design

Tectona Mitra Utama (TMU) was selected as the consultant for a haul road project in South Sumatra. The project involved designing a coal haulage road and estimating both capital (CAPEX) and operational (OPEX) costs. It is part of a broader initiative by a mining company to expand its coal production capacity, requiring the development of comprehensive infrastructure and supporting facilities. TMU's expertise was engaged to ensure the road design met the required standards for efficiency and safety in coal transportation.



Project Capability — Pit slope stability

The objective of the study is to assist JMB in obtaining information on the geotechnical and hydrogeological conditions of the planned pit and waste dump area located in Tenggarong Seberang, East Kalimantan, Indonesia, where PT Jembayan Muarabara Group operates. JMB plans to optimize Pit 119 by pushing back the northern side wall to mine 260 Kton of coal with a strip ratio of 16.9. The area has a history of slope failure, and parts of the river need to be diverted, as shown in Figure 1.



Project Capability — **Berau Public Road**

"To avoid ecologically sensitive areas, improve logistical efficiency, or access mineral resources on private land, mining companies may consider rerouting public roads. However, before making such decisions, it is important to assess the potential impacts on nearby residents, the ecosystem, and public infrastructure. Mining companies must comply with all applicable regulations, engage with relevant stakeholders, and take measures to minimize the impact of road diversion on the community.



At Tectona, we conduct studies to assess all of these aspects to ensure that the road can be constructed in the most efficient and effective manner, without compromising technical standards, environmental considerations, or regulatory compliance.

Project Capability — Underground Geotechnical Investigation

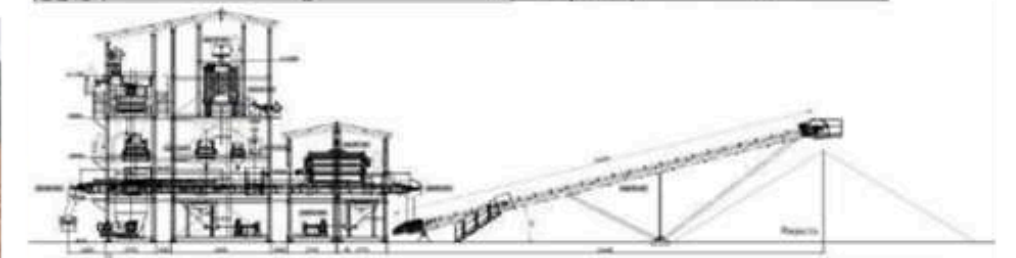
Underground mining produces less waste compared to surface mining techniques such as open-pit mining. However, it may be more costly than surface mining.



These operations require greater caution during setup and execution due to the restrictive and unpredictable nature of geological conditions. Tectona has experience in assisting clients in reducing geotechnical uncertainties during the underground mine design phase.

Project Capability — **Coal Washing Plant Foundation**

PT Asmin Bara Bronang (ABB) is the holder of a Generation III Coal Mining Business Agreement (PKP2B) based on the Decree of the Minister of Investment No. 198/A.1/1999 dated April 30, 1999. In 2019, ABB planned to build a semi-mobile Coal Washing Plant with a capacity of 125 tons per hour, allowing for potential relocation in the future. As part of the critical preparation for the construction phase, a comprehensive soil investigation was conducted to obtain suitable data for the foundation design. PT Tectona Mitra Utama carried out the soil investigation and foundation design to support the construction of the Coal Washing Plant.



Project Capability — River Diversion Study

River diversion plays a crucial role in Indonesia's mining industry, serving as a key technique regulated by Peraturan PUPR No. 21 Tahun 2020 concerning River Diversion (Regulation of the Ministry of Public Works and Public Housing No. 21 of 2020). This regulation outlines the guidelines and procedures for redirecting river flows, emphasizing the importance of sustainable development and environmental preservation in mining operations.



Project Capability — **Wind Turbine Generator Access Road Design**

Akuo Energy Indonesia is a subsidiary of Akuo Energy, a multinational company focused on renewable energy generation. Akuo is planning to develop wind farm projects in Indonesia. This design aims to present a consultation study on road design and cost analysis for civil works, including road construction and land development.



Our Construction Services Offer



Mining

We effectively demonstrated our capabilities by building a wide range of hauling roads, including bridges and/or culverts, ports and jetties, and mining camps.



Oil and Gas

We are an expert in oil and gas projects, with an intense focus on quality and health, safety, and environmental (HSE).



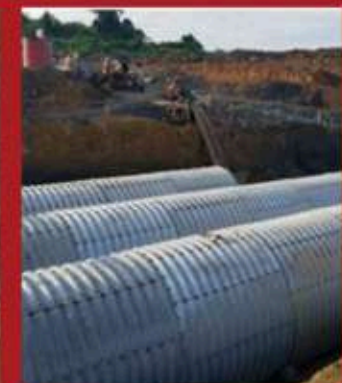
Retail & Manufacture

Using prefabricated sandwich panels, we can turn your retail, factory, and warehouse designs into reality.

Project Capability — Aramco & Gabion Construction

Constructing giant steel culverts with a 3-meter diameter in three rows across a 35-meter span at two locations, along with installing gabion baskets, is an essential part of the water diversion program to ensure continuous mining operations.

- Project Owner : PT. Cahaya Metal Perkasa
- Project Title : Aramco Installation



> Construction Project



Project Capability — **Bailey Bridge**

A Bailey bridge is constructed from standardized, modular steel components that can be rapidly assembled on-site without the need for heavy equipment or specialized tools. It is a critical solution due to its practicality and efficiency in bridging gaps quickly and effectively. PT Tectona Mitra Utama was contracted by PT Berau Coal to construct a 100-ton capacity Bailey bridge at the Berau Coal Mine Site.

- Project Owner : PT. Berau Coal
- Project Title : Bailey Bridge Construction




Project Capability — Civil Work for Building Facade Improvement

The facade is an essential component that influences a building's visual impact, sustainability, and functionality. PT Tectona Mitra Utama (TMU) was contracted by PT Castrol Manufacturing Indonesia to improve the facade of its office and factory.

- Project Owner : PT. Castrol Manufacturing Indonesia
- Project Title : Building Facade Improvement





Construction Project

Project Capability — **Sambirejo Landfill Projects**

The landfill project in Sambirejo, Sleman, Yogyakarta was constructed under the supervision of an engineering consultant and designed by PT AECOM Indonesia. Today, part of the area has been transformed into a mini soccer field that is accessible to the local community.

- Project Owner : PT GE Lighting Indonesia
- Project Title : Capping Construction Project



Project Capability — Mess Facility's KPP-PCNS Site Angsana

The mine camp facilities are built on a 2-hectare site, with a total building area of over 5,200 m². The facilities consist of 17 buildings, including mess halls, a canteen, a clinic, a water treatment plant, a powerhouse, security guard quarters, a laundry facility, waste storage, and a camp office.



- Project Owner : PT. Kalimantan Prima Persada
- Project Title : Pre-fabrication Camp and Office Facility
- Project Location : Angsana, Tanah Bumbu, South Kalimantan

Project Capability — **CPO Mill & Ancillary Building**

PT Tectona Mitra Utama (TMU) was contracted by PT Korindo Kontruksi to carry out civil works for a CPO mill in Asike, Papua.

- Project Owner : PT Korindo Kontruksi
- Project Title : CPO Mill & Ancillary Building



Project Capability — Concrete Foundation and Concrete Road Pavement

- Project Owner : PT. Korindo Konstruksi
- Project title : CPO Mill
- Works Description : Pavement Road Infrastructure
- Location : Asike, Merauke, Papua
- Project Duration : 9 Month
- Contractor : PT. Tectona Mitra Utama
- Status : On Going Project

Project CPO Mill K



Project CPO Mill Korindo-TMU, HSE MZaki
20 Nov 2023 09:15:25

➤ Construction Project

Project Capability — **Road Pavement & Parking Area Mini Soccer**

- Project Owner : GE Lighting Indonesia
- Project title : Civil Infrastructure
- Work Description : Road Pavement
- Location : Sambirejo, Yogyakarta
- Project Duration : 3 Month
- Contractor : PT. Tectona Mitra Utama
- Status : Completed





Project Capability — **Concrete Road Pavement For Loading Dock Area**

- Project Owner : PT. Aspek Kumbong
- Project title : Foundation & Road Pavement
- Work Description : Pavement Road Infrastructure
- Location : Cileungsi, West Java
- Project Duration : 3 Month
- Contractor : PT. Tectona Mitra Utama
- Status : Pass Project





Our Portfolio



Engineering

01

Fieldwork Investigation

The necessary stages to collect the in situ data for supporting designs related to earthwork.

02

Mine Geotechnical Study

The advanced stage following the results of fieldwork investigation are available conducted by senior geotechnical engineer and reviewed by geotechnical expert.

03

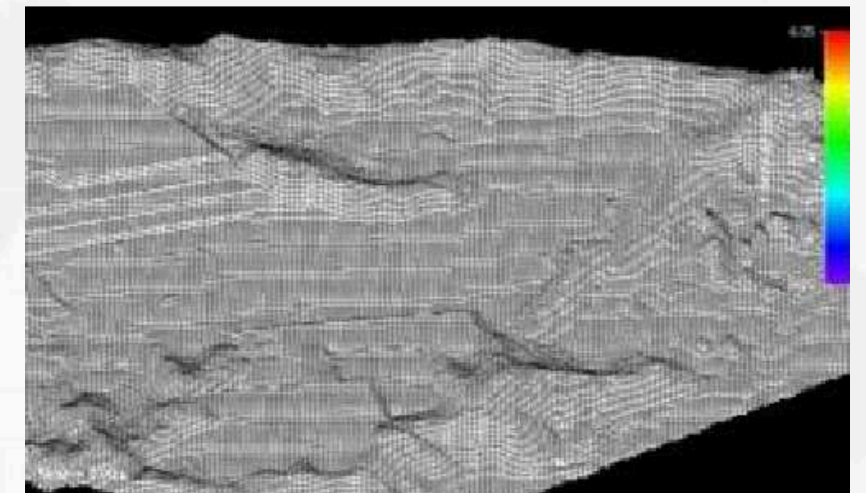
Civil & Infrastructure Engineering Study

We able to conduct which covers: Settlements, road pavement, bridges, culverts, port & jetty facilities, coal handling facilities, mine camp facilities, building structures, architecture etc.

04

Water Management & Engineering Study

Our output is investigative documents (e.g. surface water management and hydrological and hydrogeological investigations reports)



02

Our Services



Project
Management

01

Project Management

TMU can provides you project management services to help you to define the overall project budget and specific timelines for task completion and achieving the project goals



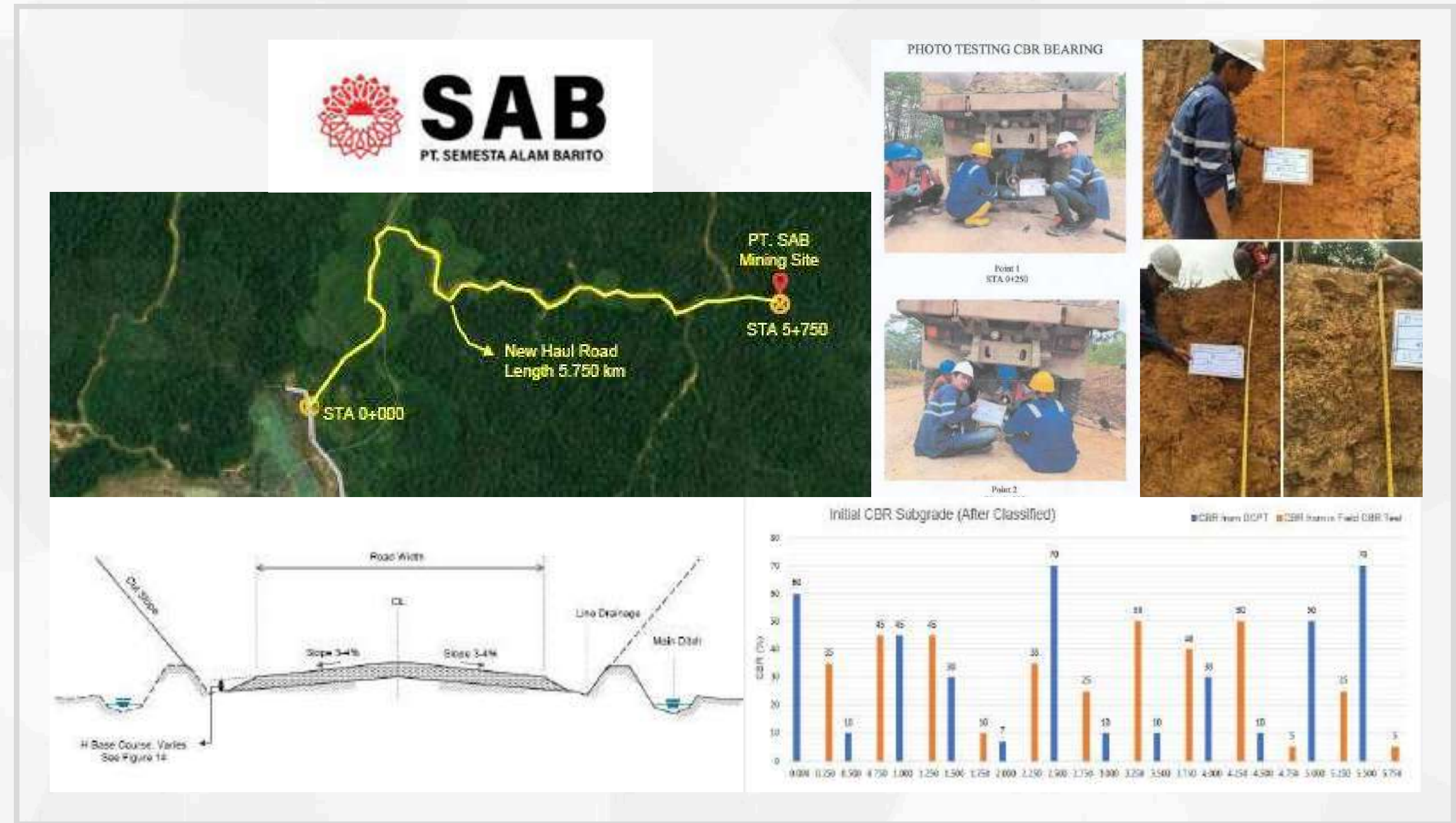
03 Engineering Projects

PROJECT CAPABILITY

SAB Haul Road Review and Inspection

PT Semesta Alam Barito is a mining company focused on coal extraction and transportation from the stockpile to the seaport. Currently, the company is planning to operate a coal mining site in Penda Siron, Laung Tuhup subdistrict, Murung Raya district, Central Kalimantan. Preparations are underway through several infrastructure developments, one of which is the construction of a haul road.

PT Semesta Alam Barito intends to build a long-term haul road to transport coal from the mining site to the port, with a total planned length of 5.750 km. At this stage, the company has appointed PT Tectona Mitra Utama as the design consultant to provide the structural design for the haul road.



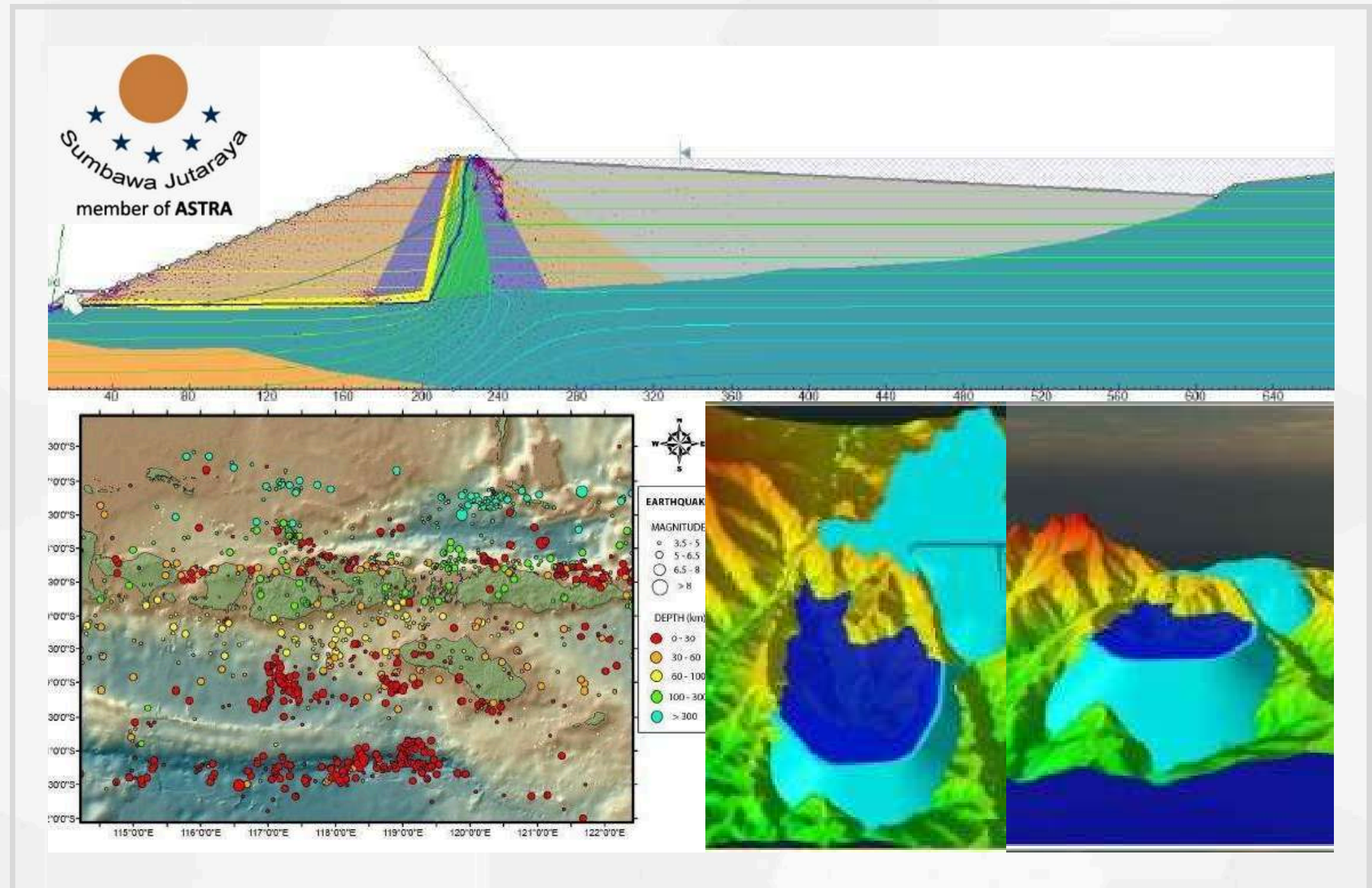
03 Engineering Projects

PROJECT CAPABILITY

Tailing Storage Facility Design (TSF Dam)

PT Tectona Mitra Utama (TMU) was contracted by PT Sumbawa Jutaraya (SJR) to conduct a Feasibility Study (FS) for Tailing Storage Facility 3 (TSF 3) for PT Sumbawa Jutaraya. SJR is a subsidiary of PT Pamapersada Nusantara, which holds a gold mine concession located approximately 100 km south of Sumbawa Island, West Nusa Tenggara Province, Indonesia.

SJR initially planned to develop a cascade of two tailings facilities to store waste material from its processing activities. The most recent TSFs were designed to accommodate 400,000 m³ and 300,000 m³ of tailings. However, an additional facility is required to support ongoing mining operations throughout the life of the mine. TSF 3 is planned to be constructed up to an elevation of +360 and is expected to have a total storage capacity of around 2,400,000 m³. SJR has expressed a specific intention for the new TSF to be designed as a downstream-type earth-fill dam, incorporating a co-disposal tailings structure, similar to the previous facilities. The construction of TSF 3 will utilize selected mine waste rock, a clay core (liner), a filter layer, and a transition zone.



03 Engineering Projects

PROJECT CAPABILITY

ABB Pit Stability and In-Pit Dump Stability



PT Asmin Bara Bronang (ABB), a subsidiary of PT Pamapersada Nusantara, is engaged in coal mining under the Coal Mining Concession Work Agreement (PKP2B) located in Central Kalimantan. The Mamput Block, consisting of Sector 1 and Sector 2, is one of the areas being exploited by ABB with an annual production target of 4.5 million tons per annum (mtpa).

To achieve this production target, ABB plans to optimize operations by shortening the disposal dumping distance through the use of in-pit dumps in areas that have already been mined out. According to the Decree of the Minister of Energy and Mineral Resources No. 1827/K/30/MEM/2018 on Guidelines for Implementing Good Mining Engineering Practices, the safe distance from the disposal foot to the mine mouth must exceed three times the disposal height. These guidelines are generally recommended for typical mining conditions. ABB has engaged PT Tectona Mitra Utama as a consultant to provide technical advice and prepare an engineering report for the in-pit dump design, with the goal of ensuring that the proposed safe distance complies with the applicable regulations and gains approval from the Ministry of Energy and Mineral Resources.



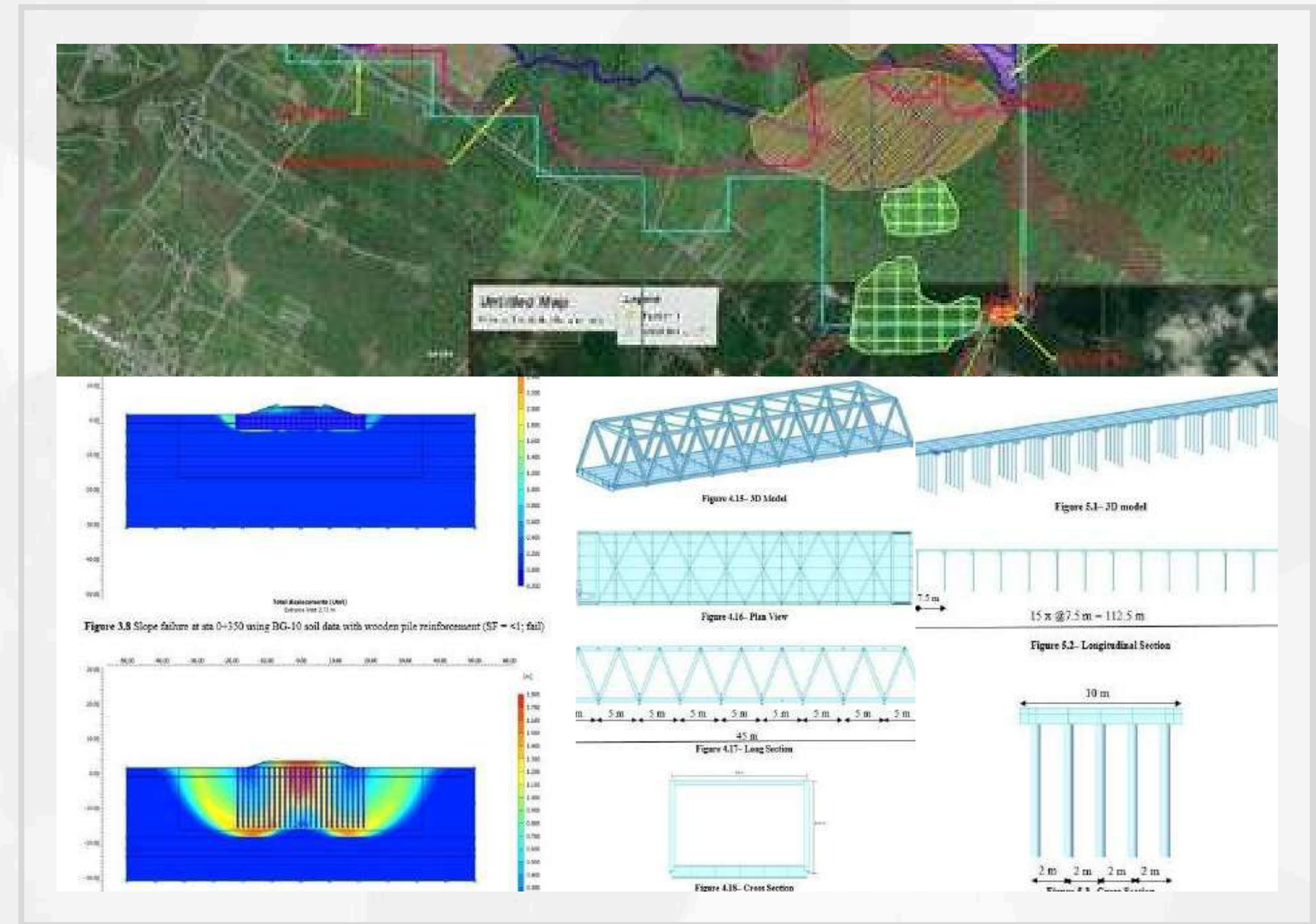
03 Engineering Projects

PROJECT CAPABILITY

NCN Hauling Road & Bridge Design

PT Tectona Mitra Utama (TMU) was contracted by PT Quantus Consulting Indonesia (QCI), on behalf of **PT Nirmala Coal Nusantara (NCN)**, to conduct a geotechnical investigation and a prefeasibility study for infrastructure needs including haul road design, bridge design, camp foundation design, and stockpile planning for NCN, located in Meulaboh, Aceh, Indonesia.

The main challenge of the project was designing 10 km of haul road over thick soft soil within a limited area of the mining concession. TMU collaborated with PT Quantus Consulting Indonesia as the mining consultant and successfully delivered a high-quality design.



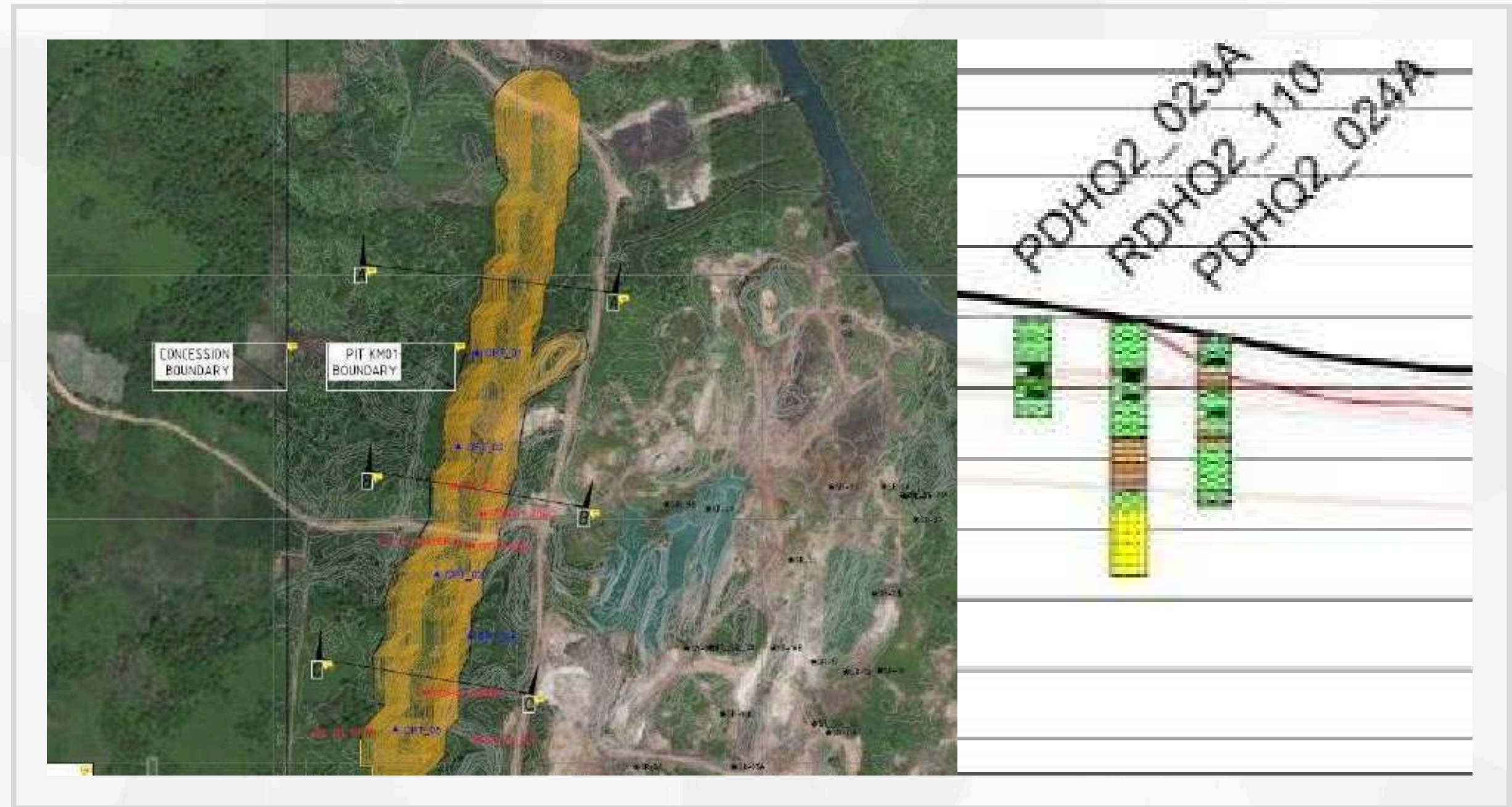
03 Engineering Projects

PROJECT CAPABILITY

RKBM Jorc Assessment

PT Raja Kutai Baru Makmur (Raja Kutai Baru Makmur) is an Indonesian coal mining company that owns a concession covering over 8,500 hectares in Kutai Kartanegara Regency. The company produces approximately 30,000-40,000 tons of coal per month and operates as a subsidiary of PT Ancora Energy.

PT Tectona Mitra Utama was hired to provide geotechnical recommendations for the JORC assessment of the pit high wall and low wall designs, including cuts into alluvial soft soils.

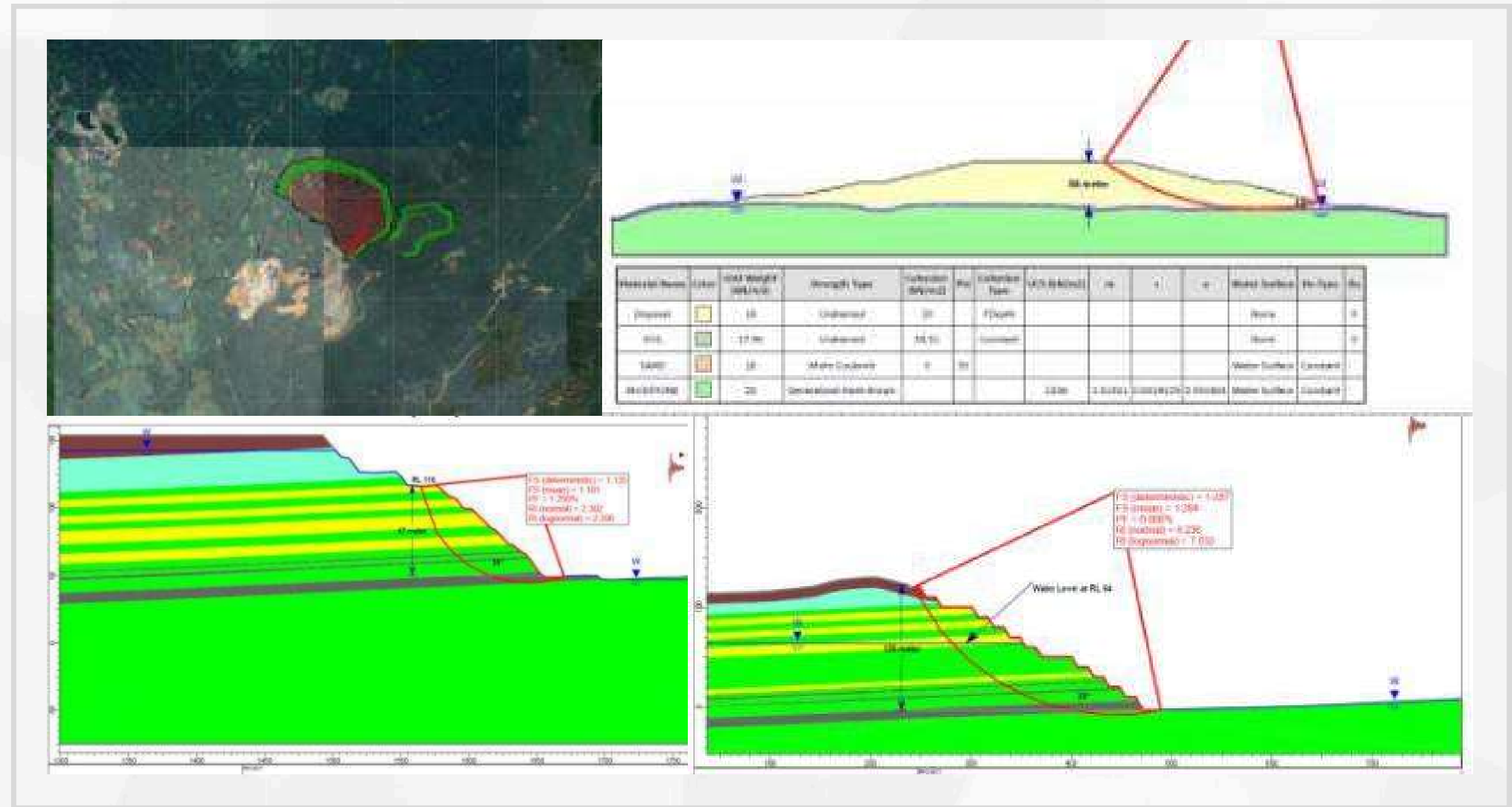


03 Engineering Projects

PROJECT CAPABILITY

Geotechnical Review for JORC

PT Tectona Mitra Utama (TMU) was contracted by PT. Cipta Kridatama to perform back analysis for pit stability. As the mining contractor in the Client's Concession, **PT. Cipta Kridatama** required this geotechnical study to ensure safe mine operation and optimize mining activities. The work has been completed.



03 Engineering Projects

PROJECT CAPABILITY

Geotechnical Investigation for Geothermal Facilities

PT Tectona Mitra Utama (TMU) has been contracted by **PT. Energy Development Corporation Indonesia**, which holds a geothermal concession in the Kerinci Region, Jambi. TMU will perform a geotechnical investigation, including drilling, test pit, and DCPT, for a geothermal infrastructure development project. The work is still ongoing.



03 Engineering Projects

PROJECT CAPABILITY

River Crossing Structure Detail Design

PT. Tectona Mitra Utama (TMU) was contracted by **PT. Asmin Bara Baronang** to perform the detailed design for a river crossing structure, serving as remedial work after a flooding event.



03 Engineering Projects

PROJECT CAPABILITY Structure

The **Transjakarta Bundaran HI** bus stop experienced a fire during a demonstration. PT. Priatman Bangun Nusa engaged PT. Tectona Mitra Utama to investigate the damaged steel structure and recommend whether it could be remediated or needed replacement. The investigation was performed using ultrasonic equipment to evaluate the steel's material strength.



03 Engineering Projects

PROJECT CAPABILITY

Bridge Design

PT Asmin Bara Baronang (ABB) holds a Generation III Coal Mining Business Agreement (PKP2B), granted by the Decree of the Minister of Investment No. 198/A.1/1999 on April 30, 1999. ABB has now entered the Coal Production Operations stage, as authorized by the Decree of the Minister of Energy and Mineral Resources No. 36.K/30/DJB/2013 on January 14, 2013. Additionally, ABB has secured a Forest Area Borrowing Permit (IPPKH) for Coal Exploitation and Supporting Facilities from the Minister of Forestry, based on Decree No. SK.28/Menhut-II/2011 on February 2, 2011.

The scope of work for this project included reviewing the technical planning conducted by another consultant, carrying out the structural planning, and reviewing the foundation design. The bridge has been successfully built and is now operational.

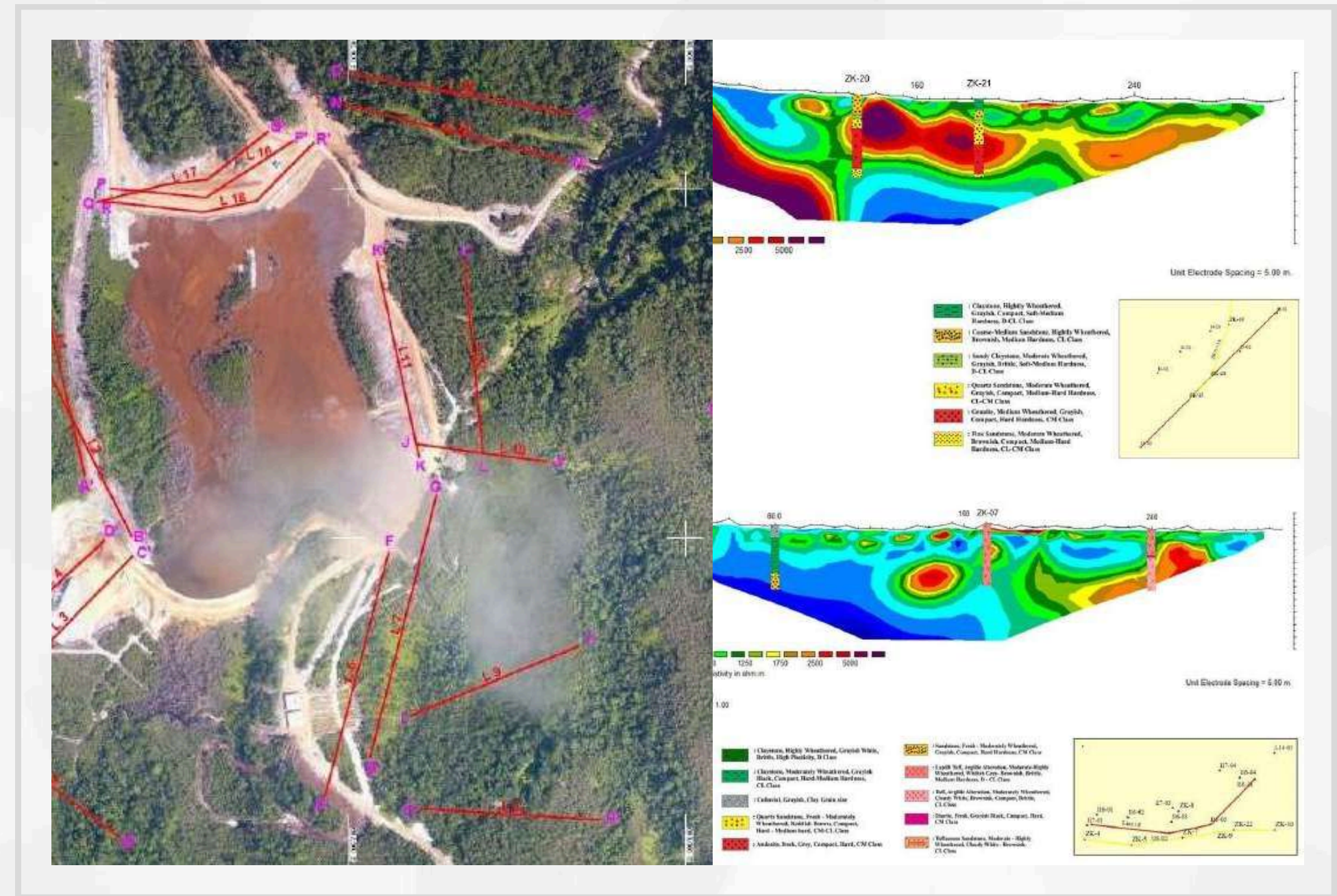


03 Engineering Projects

PROJECT CAPABILITY

Geotechnical & Geophysical

The primary objective of the investigation was to use geophysical techniques to identify soil layers and any potential slip or fault surfaces. A secondary objective was to assess for any evidence of underground cavities. The field data acquisition was performed by the TMU team, with eighteen Electrical Resistivity Imaging (ERI) lines having been acquired.

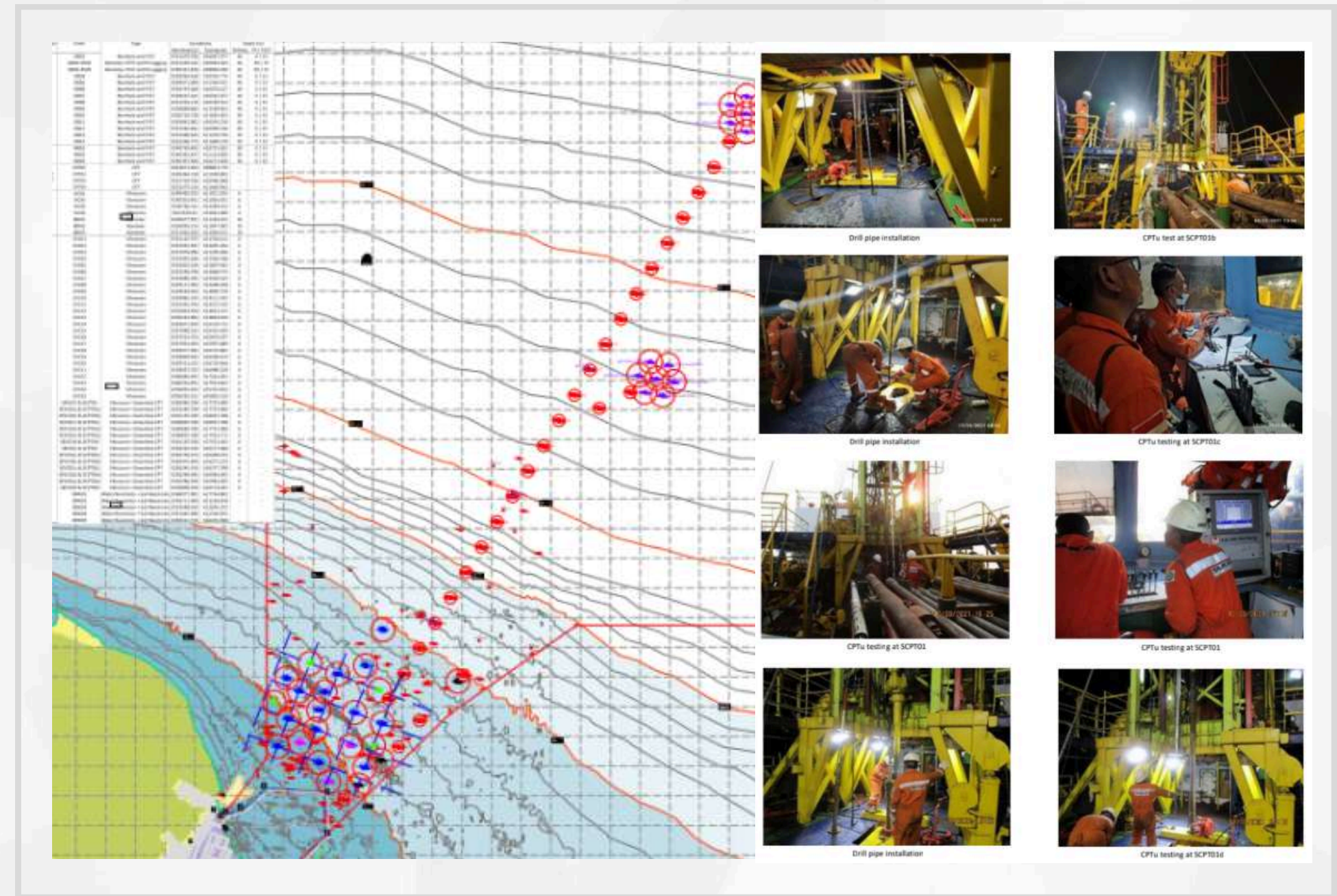


03 Engineering Projects

PROJECT CAPABILITY

Geotechnical & Geophysical

PT Haskoning Indonesia (RHDHV) is planning to develop the Marine Terminal and Offshore Facilities for PT Pertamina Rosneft Pengolahan & Petrokimia in Tuban, East Java, Indonesia. PT Tectona Mitra Utama (TMU) has been contracted by RHDHV to serve as the client representative supervising the geotechnical survey for these facilities.





An affiliated company of Tectona Mitra Utama (TMU) is committed to **revolutionizing the mining industry** by delivering **high-performance, reliable, and sustainable energy solutions** tailored for large-scale mining operations.



OUR FOCUS

in the Mining Industry:



► **Reliable Power Solutions**

Ensuring an **uninterrupted energy supply** maximizes productivity and operational efficiency.

► **Sustainable Energy Integration**

Implementing **cleaner, cost-efficient energy solutions** reduces environmental impact.

► **Customized Engineering Solutions**

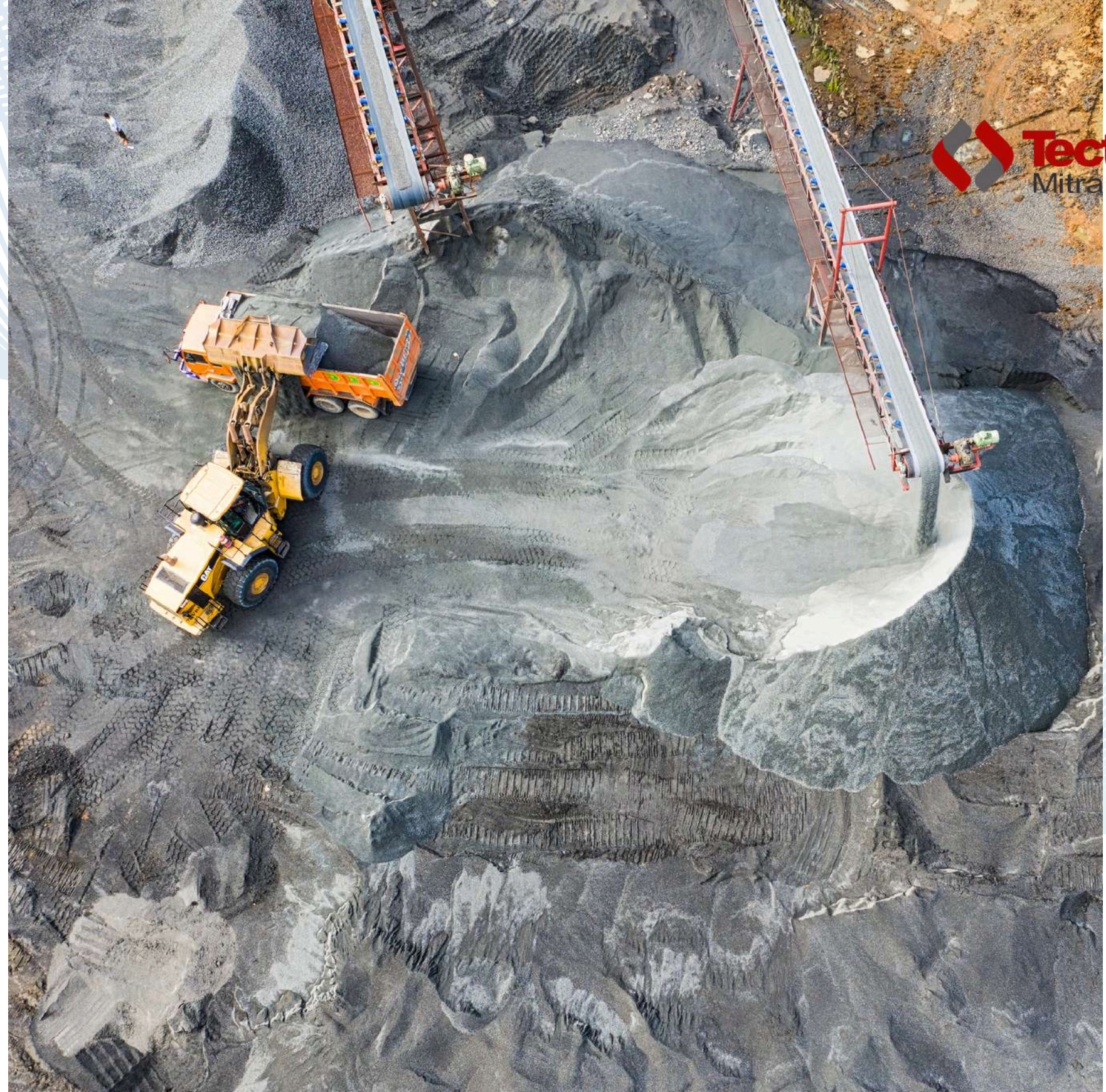
Developing **tailored power infrastructure** meets the unique demands of mining projects.

► **Operational Excellence**

Leveraging **cutting-edge technology and expertise** enhances safety, efficiency, and long-term sustainability.

OUR VISION

To be the leading private mining company that delivers sustainable value, excellent services, and products to customers in Indonesia and overseas.



OUR MISSION

1. Conducting business with good mining practices and good corporate governance to optimize current operations.
2. Ensuring sustainable profit growth to maximize shareholder value.
3. People are a valuable asset, fostered through continuous learning, digital innovation, and sustainable solutions across all operations.
4. Focusing on health and safety for our people while committing to sustainable efforts for the environment.
5. Enhancing social responsibility awareness in our operational areas.



Health, Safety and Environment

We prioritize the well-being of our employees, stakeholders, and the environment by ensuring safe and sustainable practices.

Honesty and Integrity

We uphold transparency, ethics, and accountability in all our actions and decisions.

People

We value and respect our people, fostering a culture of growth, inclusion, and empowerment.



Ownership

We take responsibility for our actions, striving for excellence and continuous improvement.

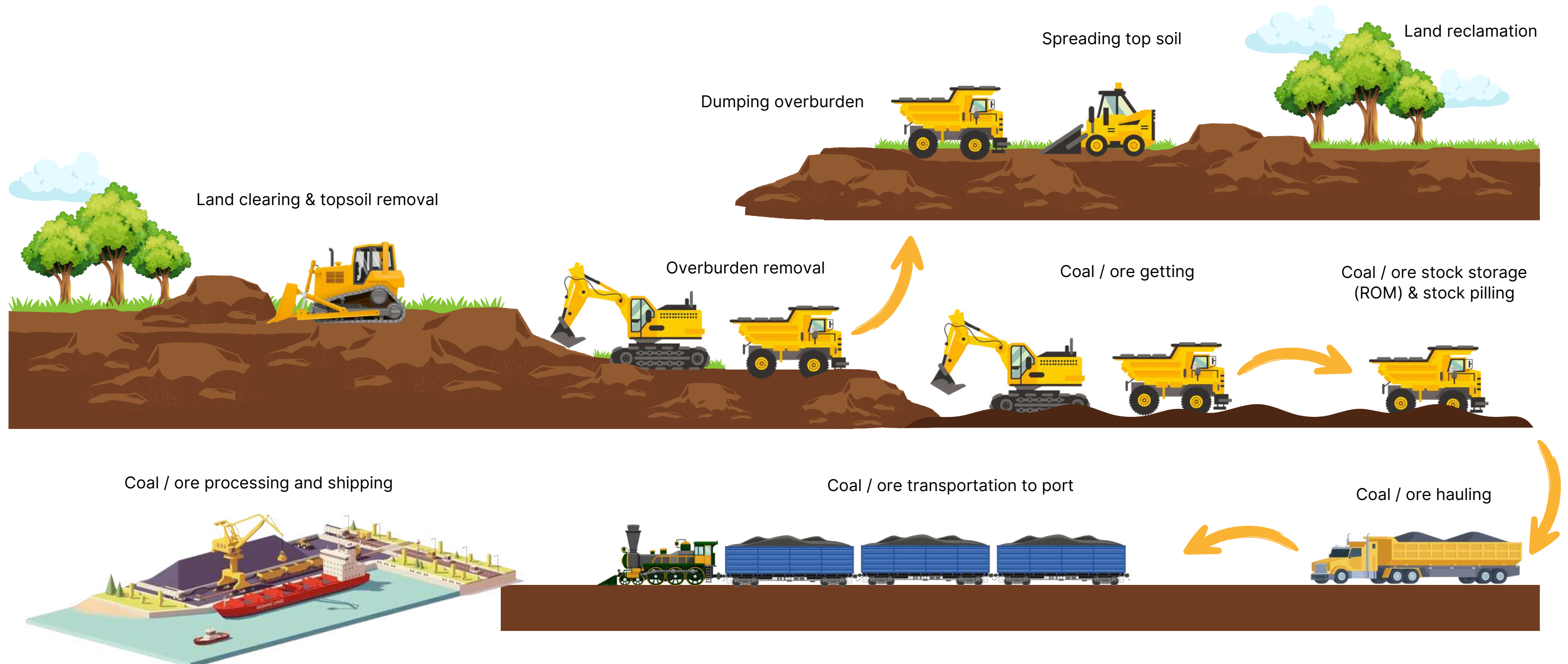
Sustainable and Innovation

We commit to sustainable growth by embracing innovation and forward-thinking solutions.

Teamwork

We believe in collaboration and synergy, working together to achieve shared success.

OUR SERVICE



OUR PORTFOLIO

Galian C



Galian C
Production Capability



150.000 m³/annum



Overburden dan Coal Getting - site RKBM



Overburden Production Capability



3.000.000 BCM/annum



Coal Getting Production Capability



1.000.000 ton/annum

Hauling Service



Hauling
Production Capability



1.000.000 ton/annum



TECTONA CARGO

Tectona Anugrah Pratama Cargo

PT TECTONA ANUGRAH PRATAMA CARGO

Company Profile



PT TECTONA ANUGRAH PRATAMA CARGO is a company engaged in general trading and services, with one of its core business activities being domestic courier and cargo shipping services.

Initially established as a legal entity under the status of a CV, **PT TECTONA ANUGRAH PRATAMA CARGO** was formally founded on January 9, 2023, through legal endorsement by Notary Hadijah, SH, M.Kn., located at Jl. HOS Cokroaminoto No. 81, Menteng, Central Jakarta. The business operates out of Kindo Square, located at Jl. Duren Tiga Raya No. 101, Block B8 (Basement Floor), South Jakarta.

Equipped with reliable transportation resources and an extensive network throughout Indonesia, along with support from shipping partners located in major cities across the country, **PT TECTONA ANUGRAH PRATAMA CARGO** has the capability to provide delivery services nationwide via land, sea, and air routes.



About Us

“

***Your Trusted
Logistics Solution***



Vision

Become 1st on delivery services in Indonesia with quality, responsible and reliable services.

Mission

Create modern infrastructure and improving company performance and service to all client to achieve customer satisfaction.





TECTONA CARGO

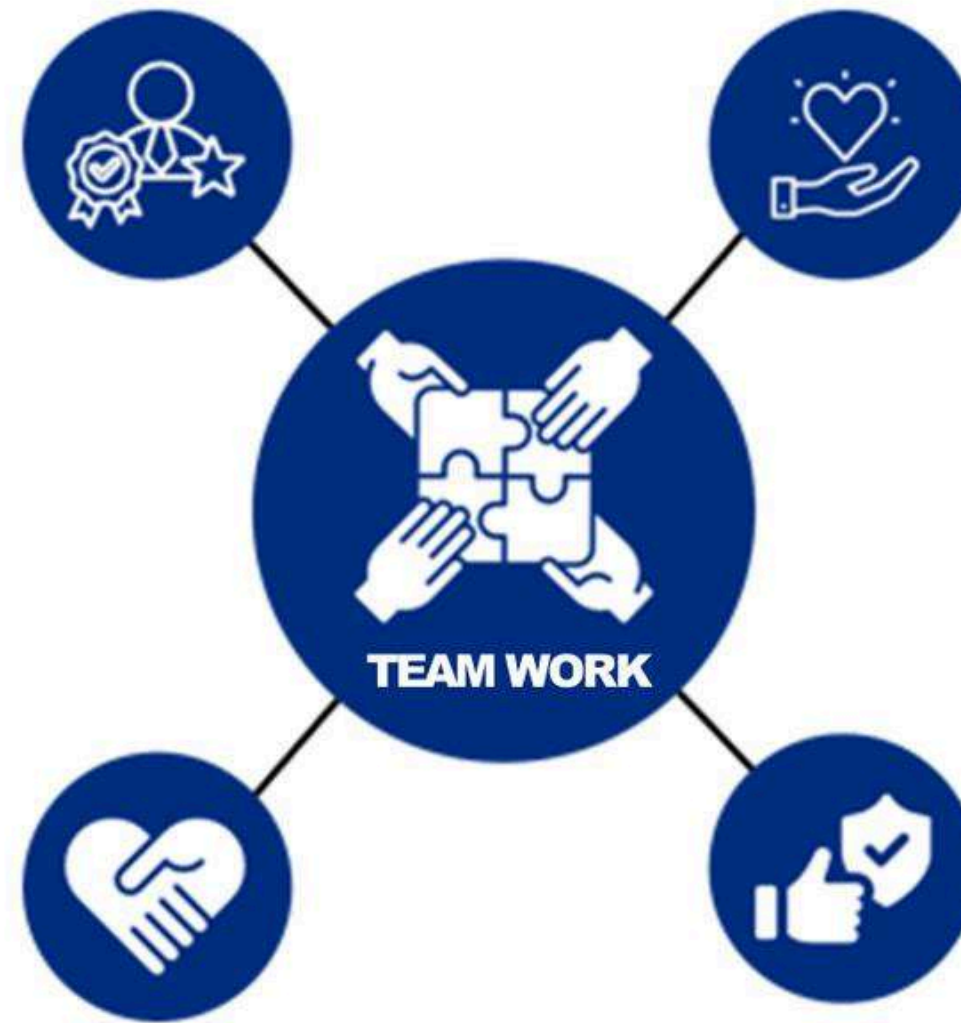
Tectona Anugrah Pratama Cargo

PROFESSIONAL

- Work according procedures
- Prioritize quality
- Complete work thoroughly and on target
- Accept feedback and suggestions for mutual improvement

COMMITMENT

- Keep promises to customers
- Complete orders according to quality standards and time
- Resolve customer complaints accurately and appropriately
- Actively collaborate as a good team



Core Value

SINCERE

- The best greeting for customers
- Serve sincerely
- Priority serving to customers, colleagues and partners

RELIABLE

- Reliable
- Trusted
- Make standard operating procedures a part of the company culture



**CARGO
SERVICE**



**WAREHOUSE
MANAGEMENT**



**GENERAL
TRADING**

Shipper more than 30
Partners In Indonesia.



We have Corporate client
from Middle to Large
enterprises.

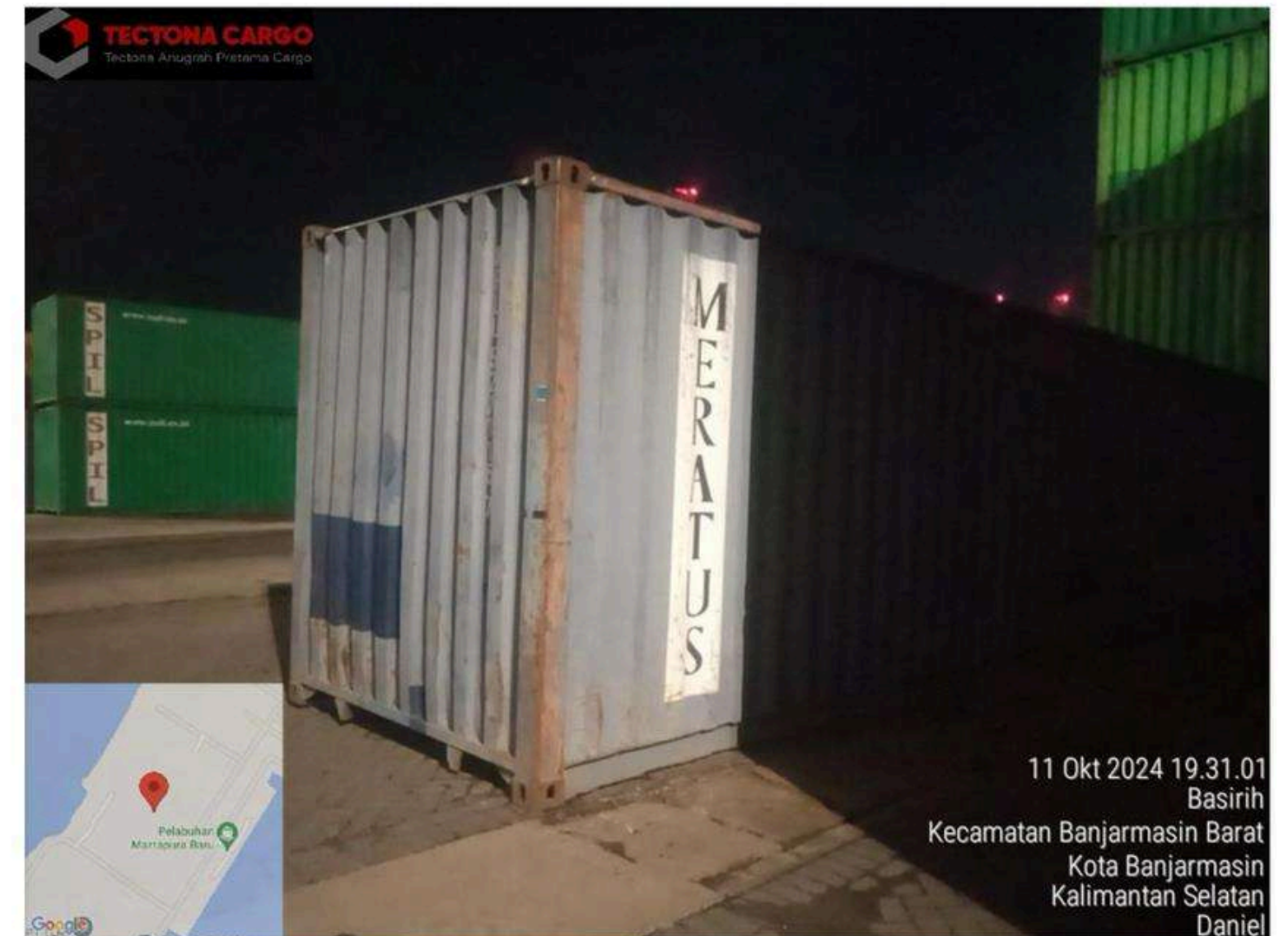


Transportation Types.

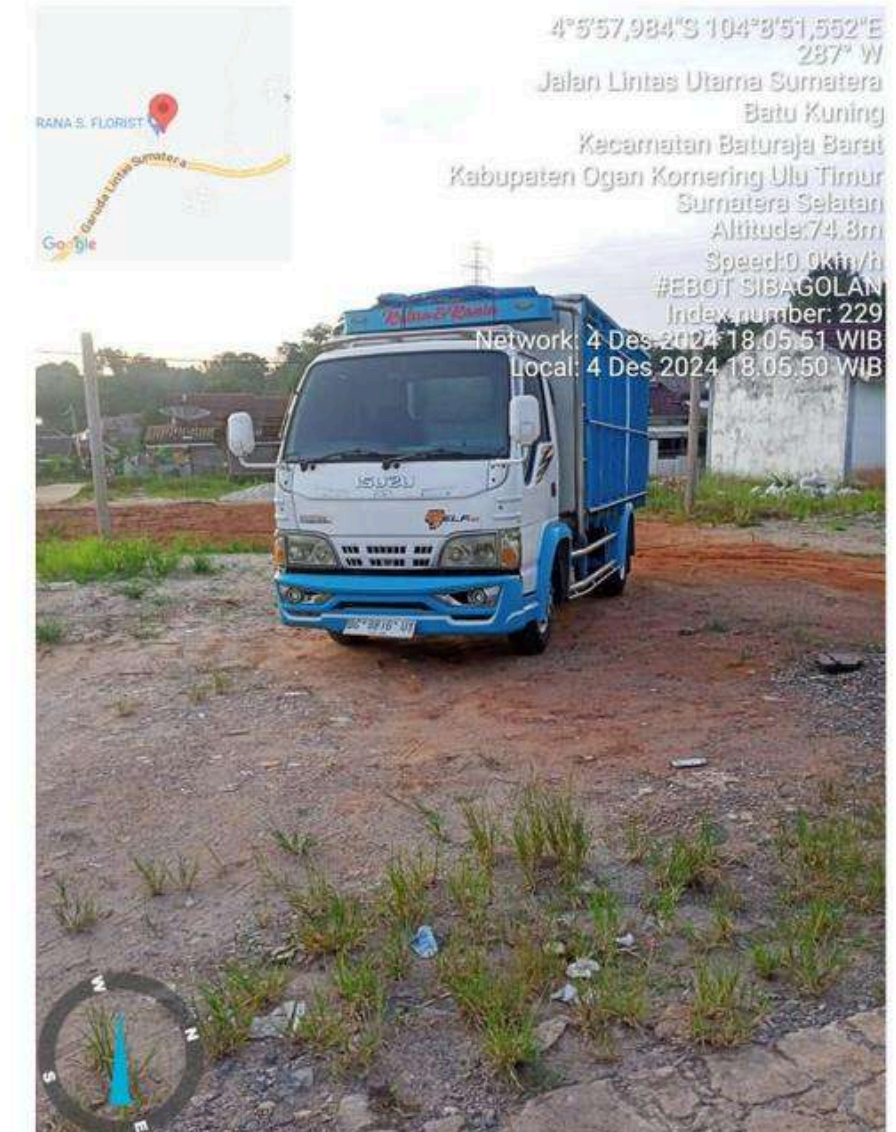
1. Motorcycle
2. Mini Blind Van
3. Light Truck
4. Truck
5. Container 20 & 40''
6. LCT







**Tectona Mitra Utama
(Bandung – Sebamban)**



Groundcheck Inti Indonesia (Jakarta – Muara Enim)



**Piwar Teknologi Indonesia
(Jakarta – Batam)**



**Warma Trierindo
(Bogor – Bintan)**

Contact Us



Menara Kuningan 3rd Floor unit L - M
Jl. HR Rasuna Said Blok X- 7 Kav 5,
Jakarta Selatan

Website : www.tectona.co.id
Email : info@tectona.co.id
Phone : 021 (298-806-92)

LinkedIn : Tectona Mitra Utama
Instagram : [@tectonamitrautama](https://www.instagram.com/tectonamitrautama)



Menara Kuningan 15th Floor unit D- E
Jl. HR Rasuna Said Blok X- 7 Kav 5, Jakarta
Selatan

Website : www.tectona.co.id
Email : info@tectona.co.id
Phone : 021 (298-806-92)
Phone : 022 (202-791-01)

LinkedIn : Tectona Mitra Utama
Instagram : [@tectonamitrautama](https://www.instagram.com/tectonamitrautama)



Menara Kuningan 15th Floor unit A
Jl. HR Rasuna Said Blok X- 7 Kav 5, Jakarta
Selatan

Website : www.tectona.co.id/tectona-baratama-energi
Email : info@tectonabaratama.co.id

LinkedIn : Tectona Baratama Energi



Menara Kuningan 12nd Floor unit H
Jl. HR Rasuna Said Blok X- 7 Kav 5, Jakarta Selatan

Website : www.tectona.co.id/tectona-cargo
Email : info@tectonacargo.co.id
Phone : 0822-6061-0066

LinkedIn : Tectona Anugerah Pratama Cargo
Instagram : [@tectonacargo](https://www.instagram.com/tectonacargo)