



Beyond Engineering Solutions

The starting point for
your sustainable future

 *Delivering with Pride*





EPC

- Engineering
- Procurement
- Construction



Engineering

- Project Management
- Fieldwork Investigation
- Mine Geotechnical Study
- Civil & Infrastructure Study
- Water Management & Engineering Study



Logistic Solution

- Cargo Services
- Warehouse Management
- General Trading



Mining Services

- Overburden Removal
- Coal/Ore Getting
- Hauling
- Land Reclamation

Integrity

Integrity forms the bedrock of our operations in engineering and construction.



Quality

Quality is at the forefront of our engineering and construction services.



People

Our employees are central to our success in engineering and construction.



Sustainability

Sustainability guides our approach to engineering and construction projects.



Health, Safety and Environmental

Given the company's involvement in complex engineering projects, ensuring the well-being of employees, contractors, and the environment is paramount.

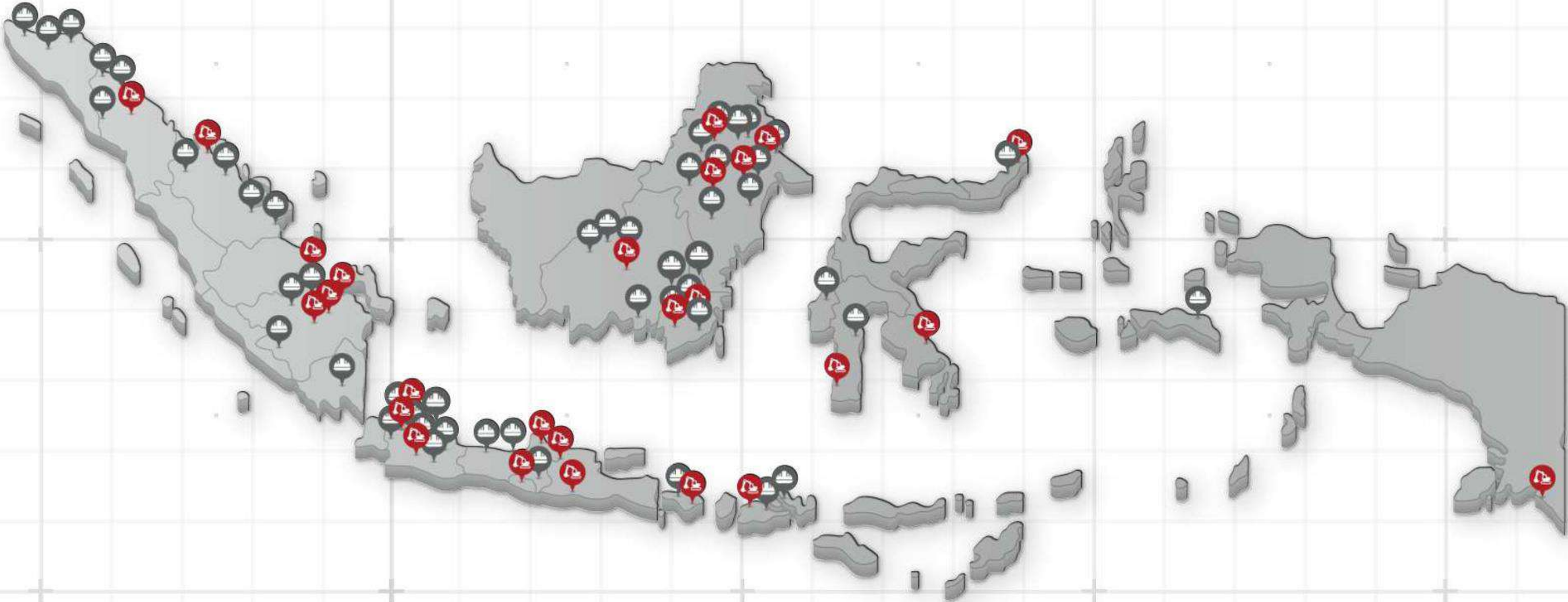
Core Values of TMU

Our core values determine **our innovative engineering** and **high-quality construction services**. It encourages us to value integrity, prioritize health and safety, empower our people, and support sustainable development in any

project. We embrace these values in order to create lasting value for our clients, stakeholders, and the environment, strengthening our engineering and construction company's reputation.

Our Portfolio In Indonesia

- Engineering project locations
- Construction project locations



Our Clients

➤ Mining



Our Clients

> Oil & Gas



> Renewable Energy



> Electricity, Telecommunication & Infrastructure

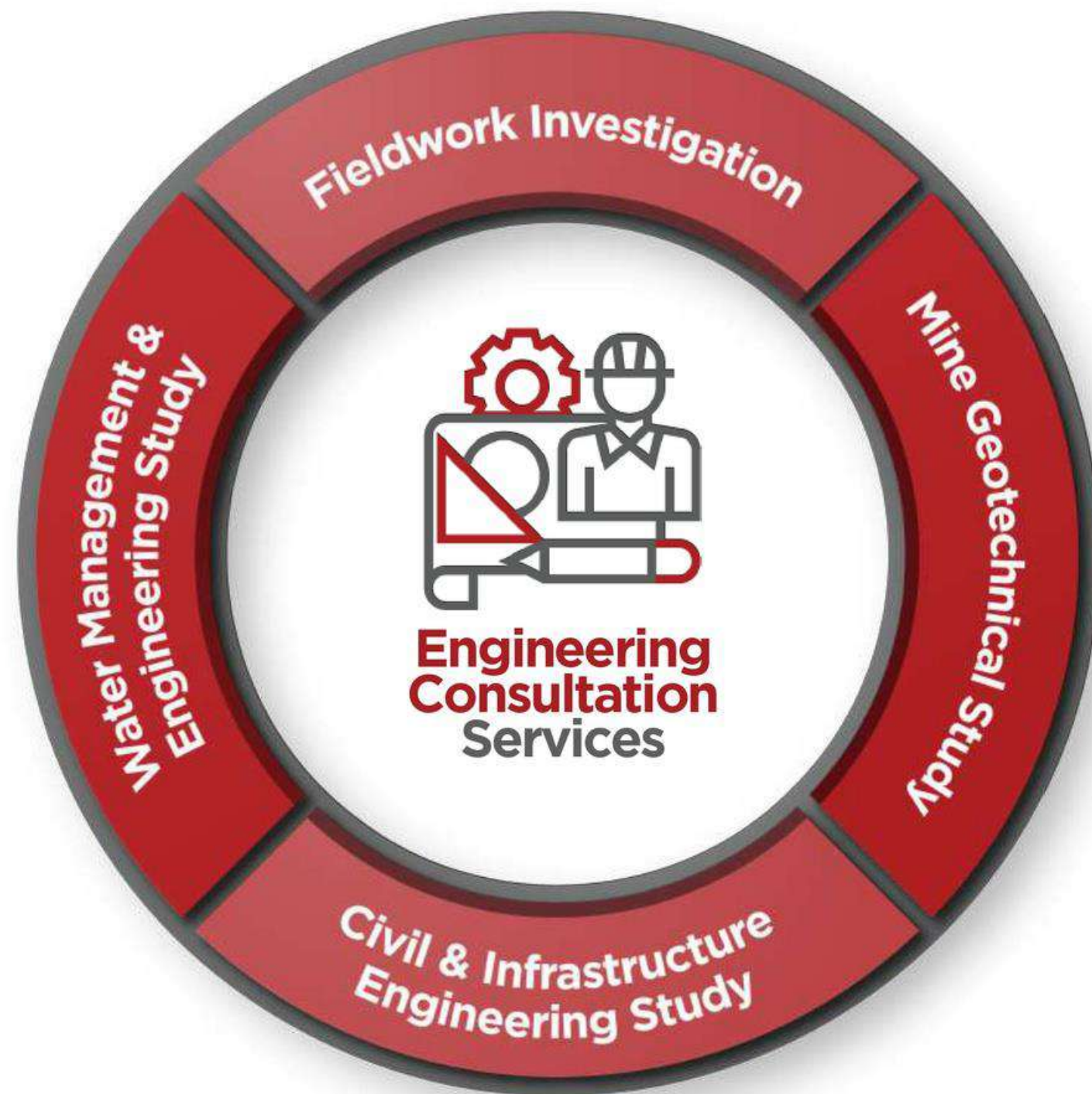


> Manufacture





Our Portfolio

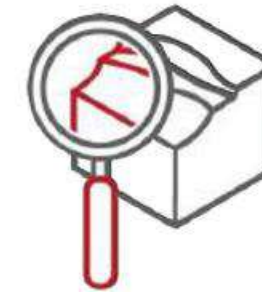


Our Engineering Service Offerings



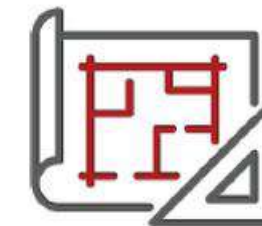
Fieldwork Investigation

To support landscaping plans, certain stages require an inventory of on-site data.



Mine Geotechnical Study

A senior geotechnical engineer conducted the advanced stage following the results of the fieldwork investigation, which was subsequently reviewed by a geotechnical expert.



Civil & Infrastructure Engineering Study

Conduct studies that cover a wide range of issues, including architecture, building structures, road pavement, bridges, culverts, port and jetty facilities, coal handling facilities, and mine camp facilities.



Water Management & Engineering Study

Reports on hydrological and hydrogeological investigations, as well as surface water management, are examples of the types of investigative papers we provide.

Engineering Project

Project Capability — **Hauling Road Design**

Tectona Mitra Utama (TMU) was selected as the consultant for a haul road project in South Sumatra. The project involved designing a coal haulage road and estimating the capital (CAPEX) and operational (OPEX) costs. The project is part of a larger effort by a mining company to expand its coal production capabilities, requiring comprehensive infrastructure and facilities development to support increased output. TMU's expertise was sought to ensure the road design meets the necessary standards for efficiency and safety in coal transportation.



Project Capability — Pit slope stability

The objective of the study is to assist JMB obtaining information regarding geotechnical, and hydrogeology condition of the planned pit and waste dump area located at Tenggarong Seberang, East Kalimantan, Indonesia, where PT Jembayan Muarabara Group, operates.

JMP plans to optimize Pit 119 N side push back north side wall to mine 260 Kton Coal with SE 16.9. There was historical failure in the area and parts of the river need to be diverted as depicted in Figure 1.



Project Capability — **Berau Public Road**

To avoid ecologically sensitive areas, improve logistical efficiency, or access mineral riches on private property, mining company may try to reroute public roadways. But before deciding to reroute public roadways, it's important to think about how it would affect nearby residents, the ecosystem, and public works projects. Mining firms must adhere to all rules and laws, communicate with relevant parties, and work to lessen the impact of road diversion on the community.



Here in Tectona we will conduct study to assess all of these aspects to ensure that the road could be constructed in most efficient and effective manner without compromising technical, environmental and regulations.

➤ Engineering Project

Project Capability — **Underground Geotechnical Investigation**

Underground mining produces less waste compared to surface mining technique such as open pit. However underground mining may cost more than surface mining.

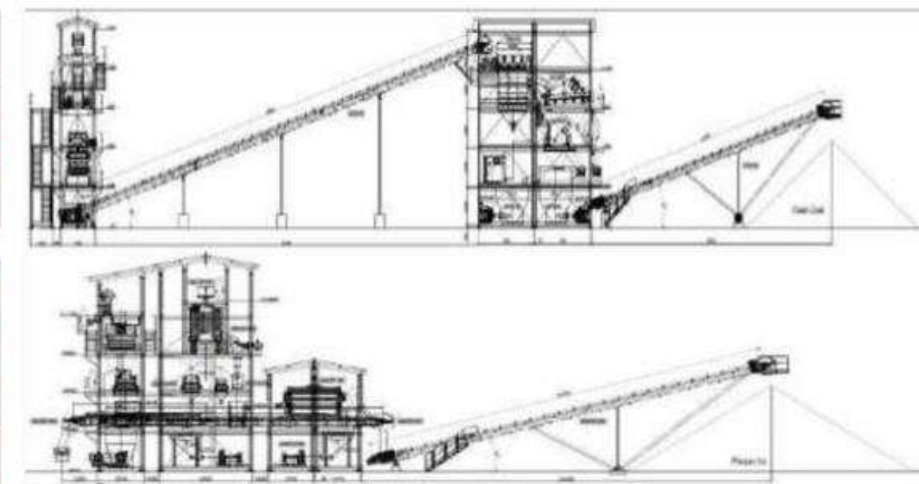


These require more caution when being set up and while in operation, due to the restrictive and unpredictable nature of geological condition. Tectona have experience in assisting Client to decrease the geotechnical uncertainty during design phase of underground mine.

Project Capability — **Coal Washing Plant Foundation**

PT Asmin Bara Bronang (ABB) is the holder of Generation III Coal Mining Business Agreement (PKP2B) based on the Decree of the Minister of Investment No. 198 / A.1 / 1999 dated 30 April 1999.

In 2019, ABB planned to build a semi-mobile Coal Washing Plant with a capacity of 125 tons per hour, allowing for potential relocation in the future. As crucial preparatory data for the construction stage, comprehensive soil investigation was conducted to obtain suitable foundation design data. PT Tectona Mitra Utama carried out the soil investigation and foundation design to support the construction of this Coal Washing plant.



Engineering Project

Project Capability — River Diversion Study

River diversion plays a crucial role in the mining industry in Indonesia, serving as a pivotal technique governed by the Peraturan PUPR no 21 tahun 2020 tentang pengalihan alur sungai (Regulation of the Ministry of Public Works and Public Housing No. 21 of 2020 concerning River Diversion). This regulation outlines the guidelines and procedures for redirecting river flows, emphasizing the importance of sustainable development and environmental preservation in mining operations.

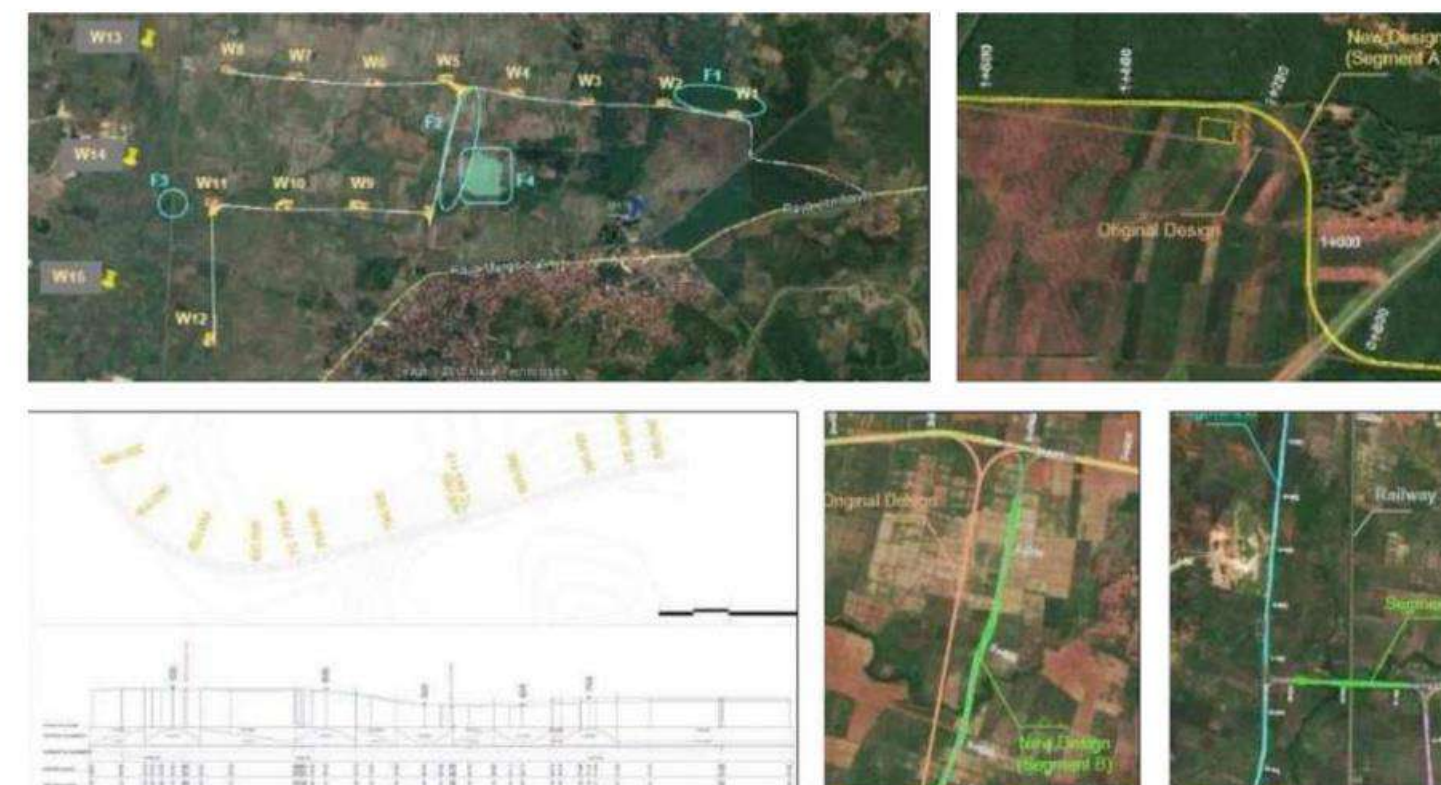


Engineering Project

Project Capability — **Wind Turbine Generator Access Road Design**

Akuo Energy Indonesia is a subsidiary of Akuo Energy, a multinational company focusing on renewable energy generation. Akuo is planning to run wind farm projects in Indonesia.

The purpose of this design is to present the consultation study of road design and cost analysis for civil work activities, which includes road construction and land development.



Our Construction Services Offer



Mining

We effectively demonstrated our capabilities by building a wide range of hauling roads, including bridges and/or culverts, ports and jetties, and mining camps.



Oil & Gas

We are an expert in oil and gas projects, with an intense focus on quality and health, safety, and environmental (HSE).



Retail & Manufacture

Using prefabricated sandwich panels, we can turn your retail, factory, and warehouse designs into reality.

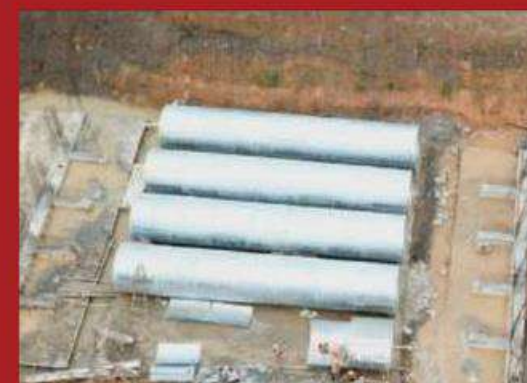


Construction Project

Project Capability — **Aramco & Gabion Construction**

Constructing giant steel culverts with a 3m diameter in three rows for a 35m span at two locations, as well as installing Gabion Baskets, are essential facilities for a water diversion program aimed at ensuring continuous mining operations.

- Project Owner : PT. Cahaya Metal Perkasa
- Project Title : Aramco Installation



➤ Construction Project

Project Capability — **Bailey Bridge**

A Bailey bridge is constructed from standardized, modular steel components that can be rapidly assembled on-site without the need of heavy equipment or specialized tools. It is a critical instrument due to its practicality and efficiency in bridging gaps immediately and effectively. PT Tectona Mitra Utama has been contracted by PT Berau Coal to construct a Bailey Bridge 100 ton capacity in Berau Coal Mine Site.

- Project Owner : PT. Berau Coal
- Project Title : Bailey Bridge Construction



Project Capability — **Civil Work for Building Facade Improvement**

The facade is an essential component that affects the visual impact, sustainability, and functionality of a building. PT Tectona Mitra Utama (TMU) has been contracted by PT Castrol Manufacturing Indonesia to improve the building facade for its office and factory.

- Project Owner : PT. Castrol Manufacturing Indonesia
- Project Title : Building Facade Improvement





Construction Project

Project Capability — **Sambirejo Landfill Projects**

Construction of the landfill project in Sambirejo, Sleman Yogyakarta. This landfill was constructed under the supervision of an engineering consultant and was designed by PT AECOM Indonesia. Currently, part of the area has been transformed into a mini-soccer field that is accessible to the local community.

- Project Owner : PT GE Lighting Indonesia
- Project Title : Capping Construction Project



Project Capability — **Mess Facility's KPP-PCNS Site Angsana**

The mine camp facilities area is constructed on a 2-hectare site boundary, with a building area of approximately more than 5200 m². The mine camp facilities comprise 17 buildings, including mess halls, a canteen, a clinic, a water treatment plant, a power house, security guard quarters, a laundry facility, waste storage, and a camp office.



- Project Owner : PT. Kalimantan Prima Persada
- Project Title : Pre-fabrication Camp and Office Facility
- Project Location : Angsana, Tanah Bumbu, South Kalimantan

Project Capability — **CPO Mill & Ancillary Building**

PT Tectona Mitra Utama (TMU) has been contracted by PT Korindo Kontruksi to Civil Work for CPO Mill in Asike Papua.

- Project Owner : PT Korindo Kontruksi
- Project Title : CPO Mill & Ancillary Building



Construction Project

Project Capability — Concrete Foundation and Concrete Road Pavement

- Project Owner : PT. Korindo Konstruksi
- Project title : CPO Mill
- Works Description : Pavement Road Infrastructure
- Location : Asike, Merauke, Papua
- Project Duration : 9 Month
- Contractor : PT. Tectona Mitra Utama
- Status : On Going Project



➤ Construction Project



Project Capability — **Road Pavement & Parking Area Sambirejo Mini Soccer**

- Project Owner: : GE Lighting Indonesia
- Project title : Civil Infrastructure
- Work Description : Road Pavement
- Location : Sambirejo, Yogyakarta
- Project Duration : 3 Month
- Contractor : PT. Tectona Mitra Utama
- Status : Completed





Project Capability — **Concrete Road Pavement For Loading Dock Area**

- Project Owner : PT. Aspek Kumbong
- Project title : Foundation & Road Pavement
- Work Description : Pavement Road Infrastructure
- Location : Cileungsi, West Java
- Project Duration : 3 Month
- Contractor : PT. Tectona Mitra Utama
- Status : Pass Project





Our Portfolio



Engineering

01

Fieldwork Investigation

The necessary stages to collect the in situ data for supporting designs related to earthwork.

02

Mine Geotechnical Study

The advanced stage following the results of fieldwork investigation are available conducted by senior geotechnical engineer and reviewed by geotechnical expert.

03

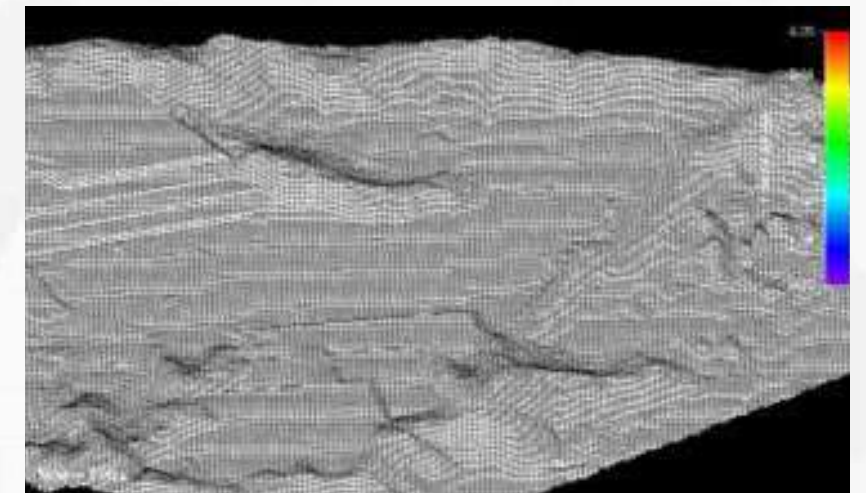
Civil & Infrastructure Engineering Study

We able to conduct which covers: Settlements, road pavement, bridges, culverts, port & jetty facilities, coal handling facilities, mine camp facilities, building structures, architecture etc.

04

Water Management & Engineering Study

Our output is investigative documents (e.g. surface water management and hydrological and hydrogeological investigations reports)



02

Our Services



Project Management

01

Project Management

TMU can provides you project management services to help you to define the overall project budget and specific timelines for task completion and achieving the project goals



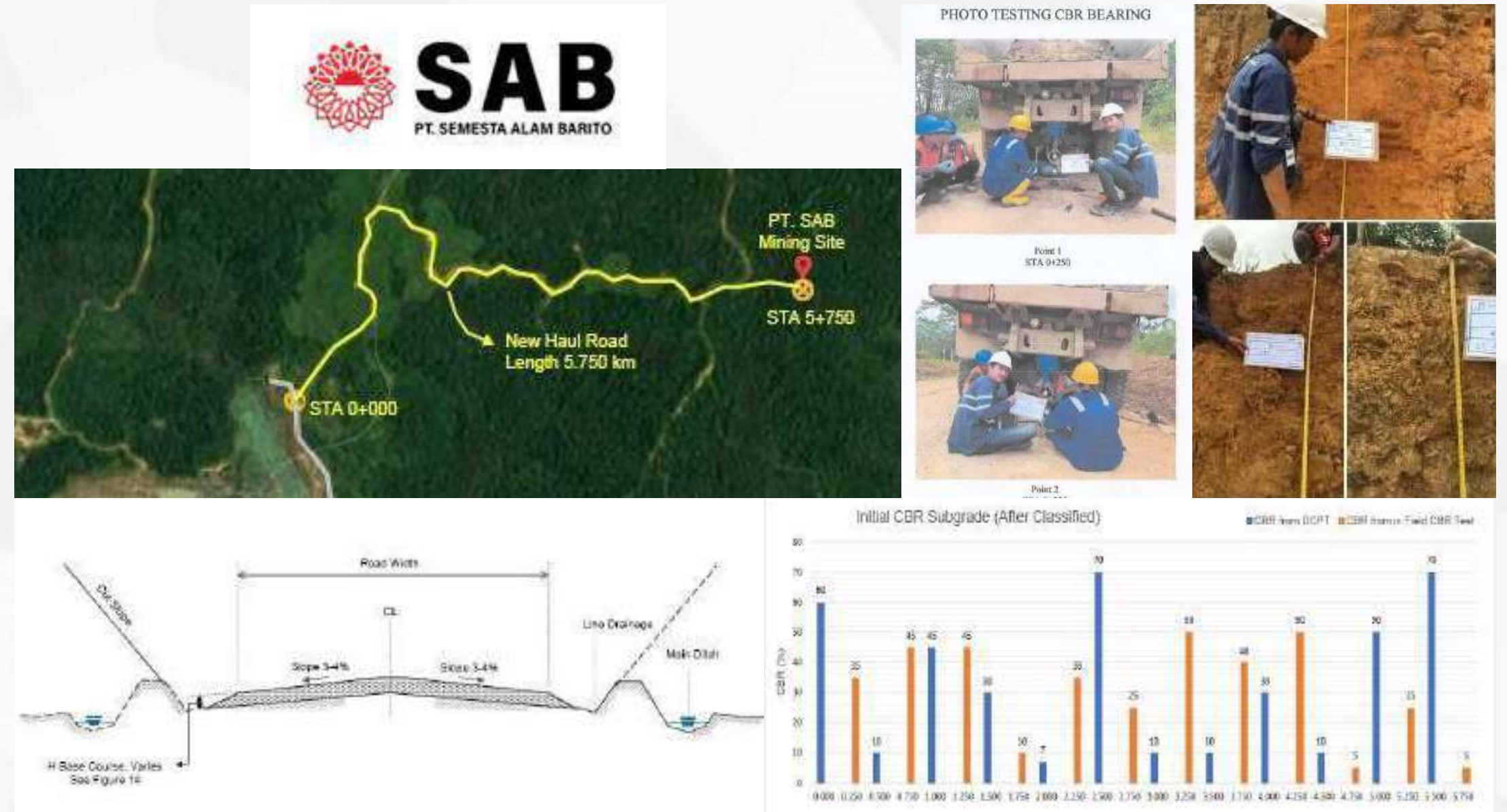
03 Engineering Projects

PROJECT CAPABILITY

SAB Haul Road Review and Inspection

PT. Semesta Alam Barito is a mining company which is focus on coal getting and coal transporting from stock pile to seaport. Currently, PT. SAB is planning to operate a coal mining site in Penda Siron, subdistrict Laung Tuhup, district Murung Raya, Central Kalimantan. Preparation progress is done by running some infrastructure works, one of which is haul road.

PT. Semesta Alam Barito intends to build a long-term haul road to transport coal from mining site to port. Total road length design is 5.750 km. In the mean of this stage, PT. Semesta Alam Barito has appointed PT. Tectona Mitra Utama as the designer consultant to provide hauling road structural design.



03

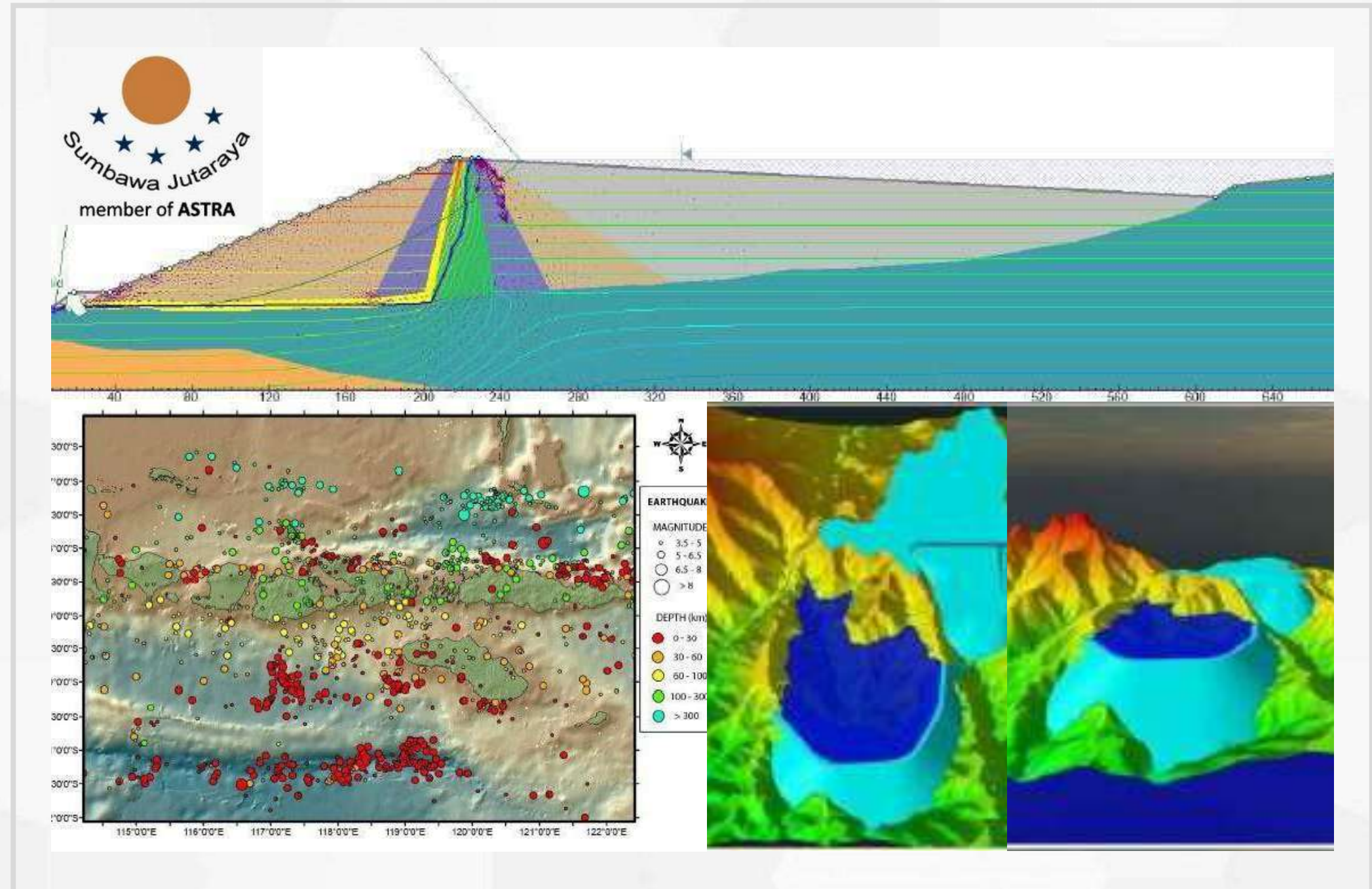
Engineering Projects

PROJECT CAPABILITY

Tailing Storage Facility Design (TSF Dam)

PT Tectona Mitra Utama (TMU) has been contracted by PT. Sumbawa Jutaraya (SJR) to perform FS study of Tailing Storage Facility (TSF 3) for PT Sumbawa Juta Raya (SJR). SJR is one of subsidiary of PT Pamapersada Nusantara which own of Gold Mine Concession that located at 100km south of Sumbawa Island, West Nusa Tenggara Province, Indonesia.

SJR initially planned to develop a cascade of two tailings facilities to store mine tailings from processing activity. The latest TSF have been planned to accomodate 400.000 m3 and 300.000 m3 of tailings. However, another TSF shall be produced to support mining activity during life of mine. The TSF 3 will be built until it reaches +360 elevations and it is estimated to have a storage volume of around 2.400.000 m3. SJR has an specific intention to the next TSF design which it will designed as downstream type earth fill dam and will be built by performing a co-disposal tailings dam structure as well as the previous one. Furthermore the selected rock mine waste, clay core (liner), filter layer and transition zone are planned to be used in the development of TSF 3.



03 Engineering Projects

PROJECT CAPABILITY

ABB Pit Stability and In-Pit Dump Stability



PT Asmin Bara Bronang (ABB) is a subsidiary of PT. Pamapersada Nusantara is engaged in coal mining which has a concession under the Coal Mining Concession Work Agreement (PKP2B) located in Central Kalimantan. The Mamput Block consisting of sector 1 and sector 2 is one of the blocks that has been exploited by ABB with an annual production target of 4.5 mtpa. To reach the annual production target, ABB plans to optimize by shortening the disposal dumping distance by conducting inpit dumps in the mine area that has been "mine out". Based on the Decree of the Minister of Energy and Mineral Resources No. 1827 / K / 30 / MEM / 2018 concerning Guidelines for Implementing Good Mining Engineering Rules, the safe distance from the disposal foot to the mine mouth must be greater than 3 times the disposal height. These guidelines are recommended for general mining conditions. ABB have contacted PT Tectona Mitra Utama as the consultant to advice and provide engineering report for inpit dump design so as to optimize the safe distance could be approved by the Minister of Energy and Mineral Resources.



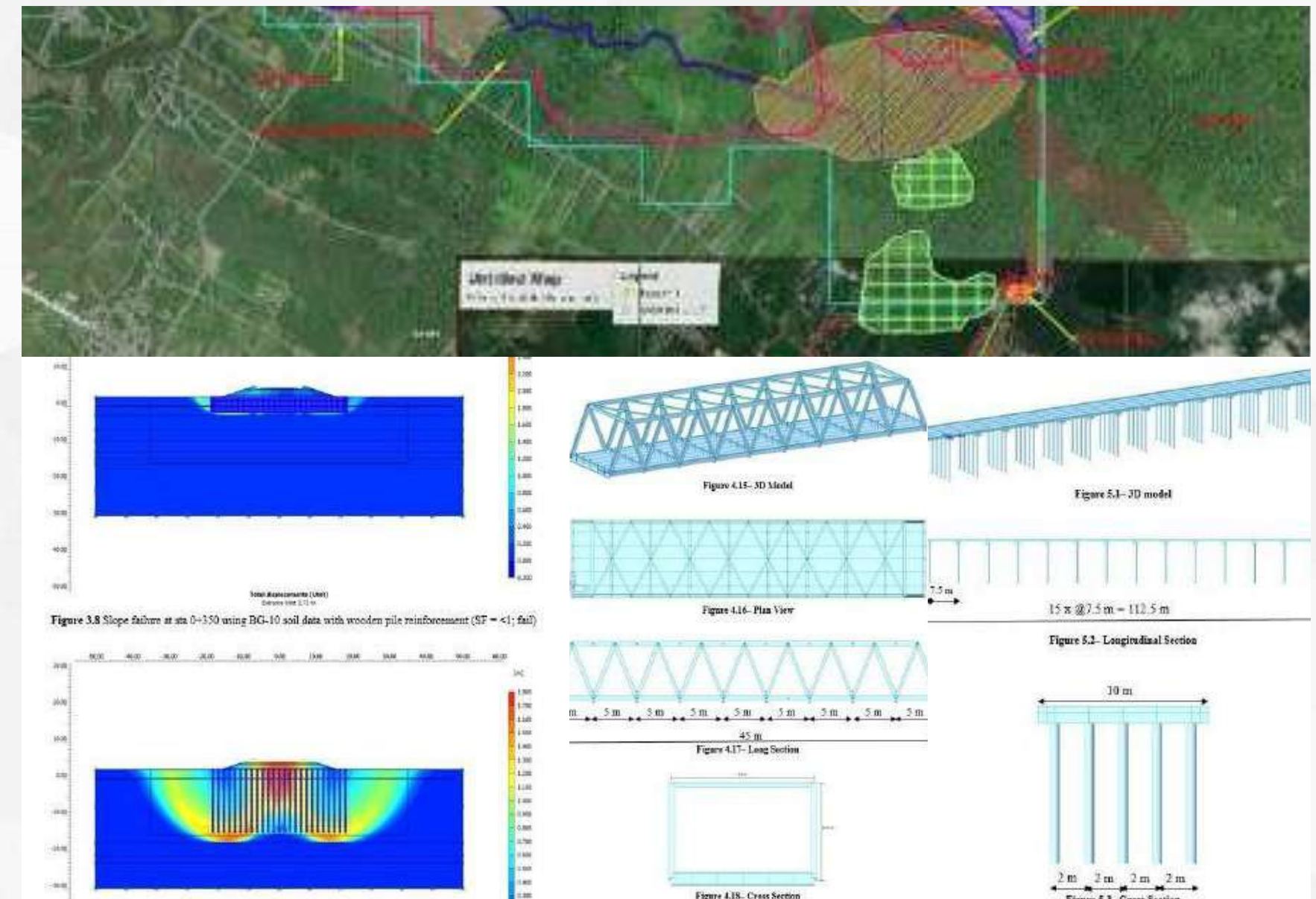
03 Engineering Projects

PROJECT CAPABILITY

NCN Hauling Road & Bridge Design

PT Tectona Mitra Utama (TMU) has been contracted by **PT Qunatus Consulting Indonesia (QCI)** on behalf of PT Nirmala Coal Nusantara (NCN) to perform Geotechnical investigation and prefeasibility study for Infrastructure needs such as haul road design, bridge design, camp foundation design, and stockpile for NCN located at Meulaboh, Aceh, Indonesia.

The Challenging of Project is to design 10 km of the hauling road above the thick soft soil with the limited area (mining concession). We have work together with PT Quantus Consulting Indonesia as the Mining Consultant and succeed to provide high quality design.



03

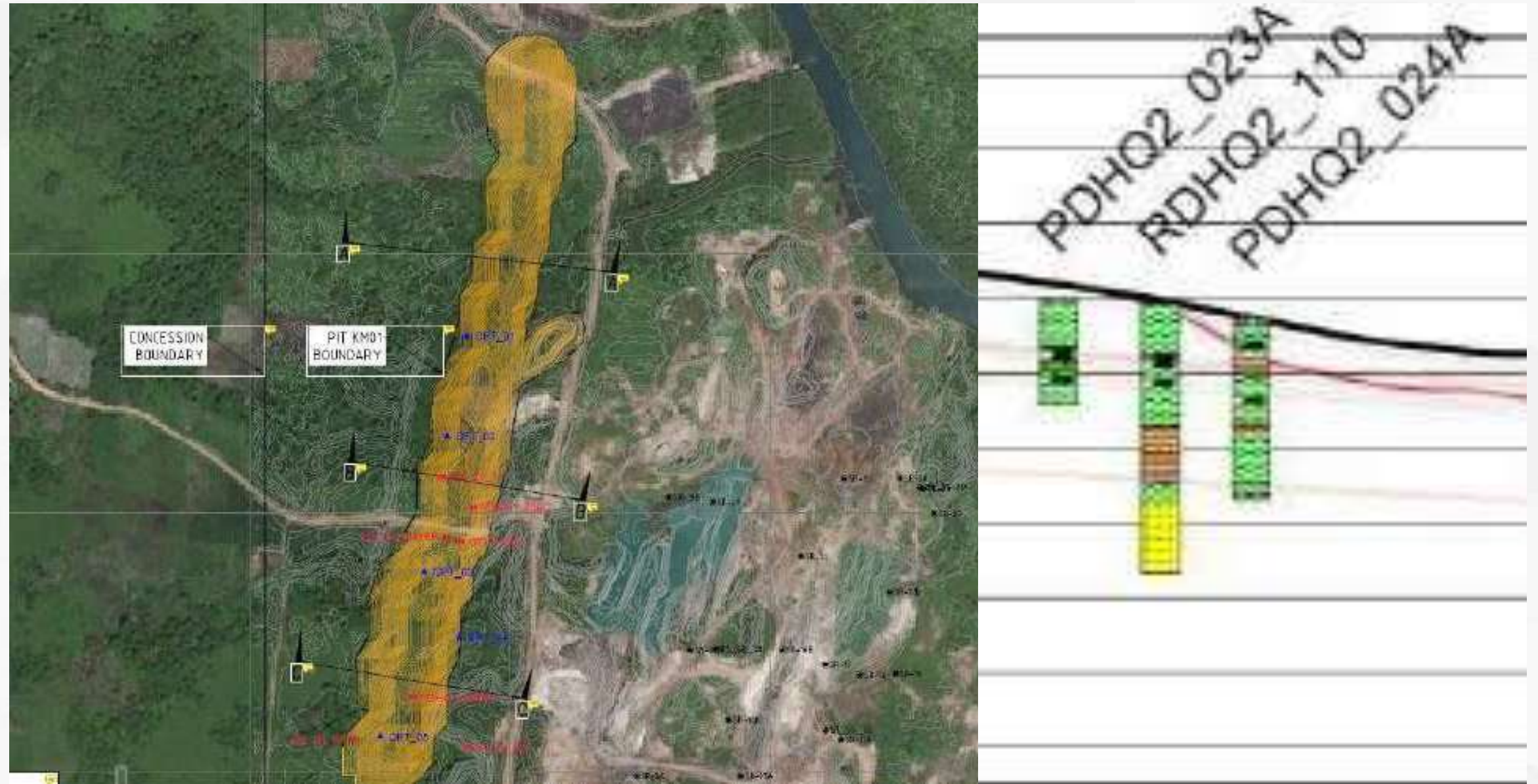
Engineering Projects

PROJECT CAPABILITY

RKBM Jorc Assessment

PT Raja Kutai Baru Makmur engages in coal mining and owns a coal concession covering an area of over 8,500 hectares in Kutai Kertanegara regency. The company produces approximately 30-40,000 tons of coal per month. The company is based in Indonesia. PT Raja Kutai Baru Makmur operates as a subsidiary of PT Ancora Energy.

PT Tectona Mitra Utama is hired provide geotechnical recommendations for JORC assessment of pit high wall and low wall design, including cut into Alluvial soft soils.

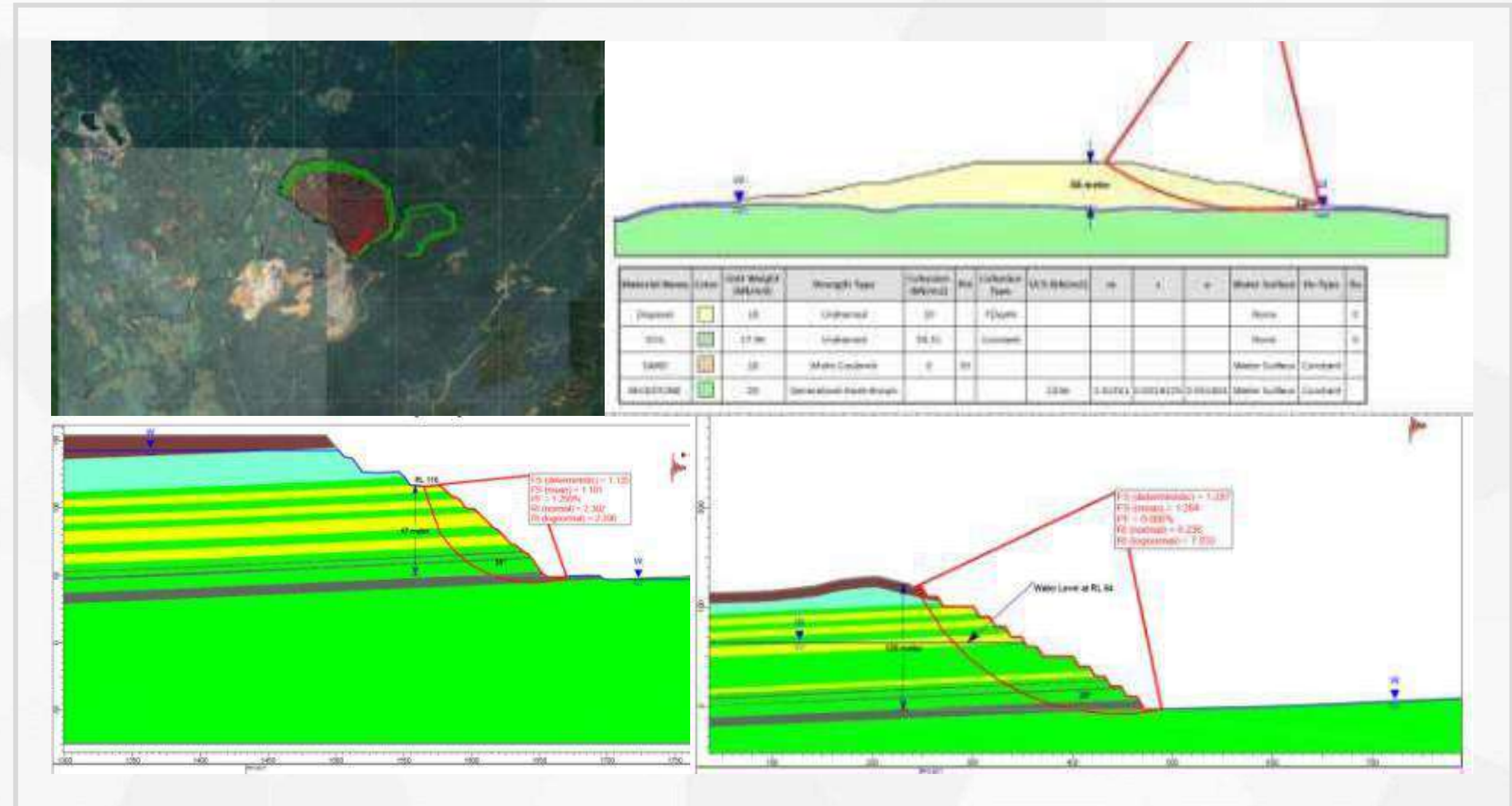


03 Engineering Projects

PROJECT CAPABILITY

Geotechnical Review for JORC

PT Tectona Mitra Utama (TMU) has been contracted by **PT. Cipta Kridatamma** to perform back analysis for pit stability. PT. Cipta Kridatama as mining contractor in the Client Concession needs geotechnical study to ensure the mine safe operation and mine optimization can be achieved. The work had been completed.



03 Engineering Projects

PROJECT CAPABILITY

Geotechnical Investigation for Geothermal Facilities

PT Tectona Mitra Utama (TMU) has been contracted by **PT. Energy Development Corporation Indonesia** whom has geothermal concession in Kerinci Region, Jambi. TMU shall perform geotechnical investigation including drilling, test pit and DCPT for geothermal infrastructure development project. The work is still on going.



03 Engineering Projects

PROJECT CAPABILITY

River Crossing Structure Detail Design

PT. Tectona Mitra Utama (TMU) had been contracted by **PT. Asmin Bara Baronang** to perform river crossing structure detail design as remedial work after flooding event occurred.



03 Engineering Projects

PROJECT CAPABILITY Structure

Transjakarta Bunderan HI Haste had been in fire due to demonstration. PT. Priatman Bangun Nusa had engaged PT. Tectona Mitra Utama to investigate and provide recommendation whether the ex fire structure steel can be used and remediated or it needs to be replaced. The investigation had been performed by using ultrasonic equipment to evaluate steel material strength.



03 Engineering Projects

PROJECT CAPABILITY

Bridge Design

PT Asmin Bara Baronang (ABB) is the holder of Generation III Coal Mining Business Agreement (PKP2B) based on the Decree of the Minister of Investment No. 198 / A.1 / 1999 dated 30 April 1999. Currently ABB has entered the stage of Coal Production Operations based on the Decree of the Minister of Energy and Mineral Resources with SK No. 36.K / 30 / DJB / 2013 dated January 14, 2013. ABB has also obtained a Forest Area Borrowing Permit (IPPKH) for Coal Exploitation and Supporting Facilities from the Minister of Forestry based on Decree No. SK.28 / Menhut-II / 2011 dated February 2, 2011.

Scope of work for this project are review of the technical planning that has been carried out by other consultant, carry out structural planning and review the foundation design. The bridge has been successfully build and has been operated.

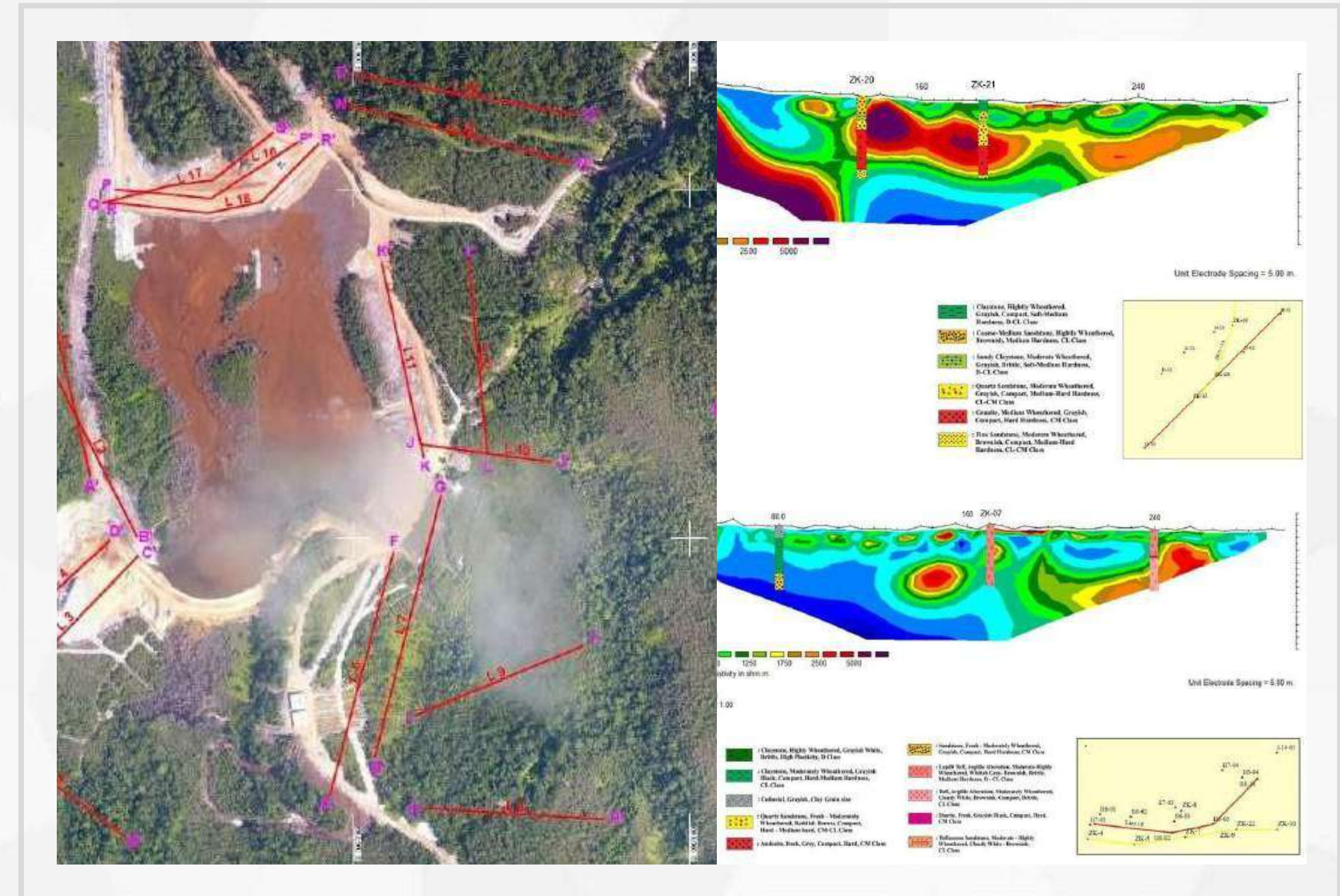


03 Engineering Projects

PROJECT CAPABILITY

Geotechnical & Geophysical

The primary objective of the investigation was to undertake the necessary geophysical technique to identify soil layers and any possible slip/fault surface, with the secondary objective being to assess any evidence of underground cavities. The field acquisition of data was performed by TMU team. The acquisition of ERI has been carried out at eighteen lines.

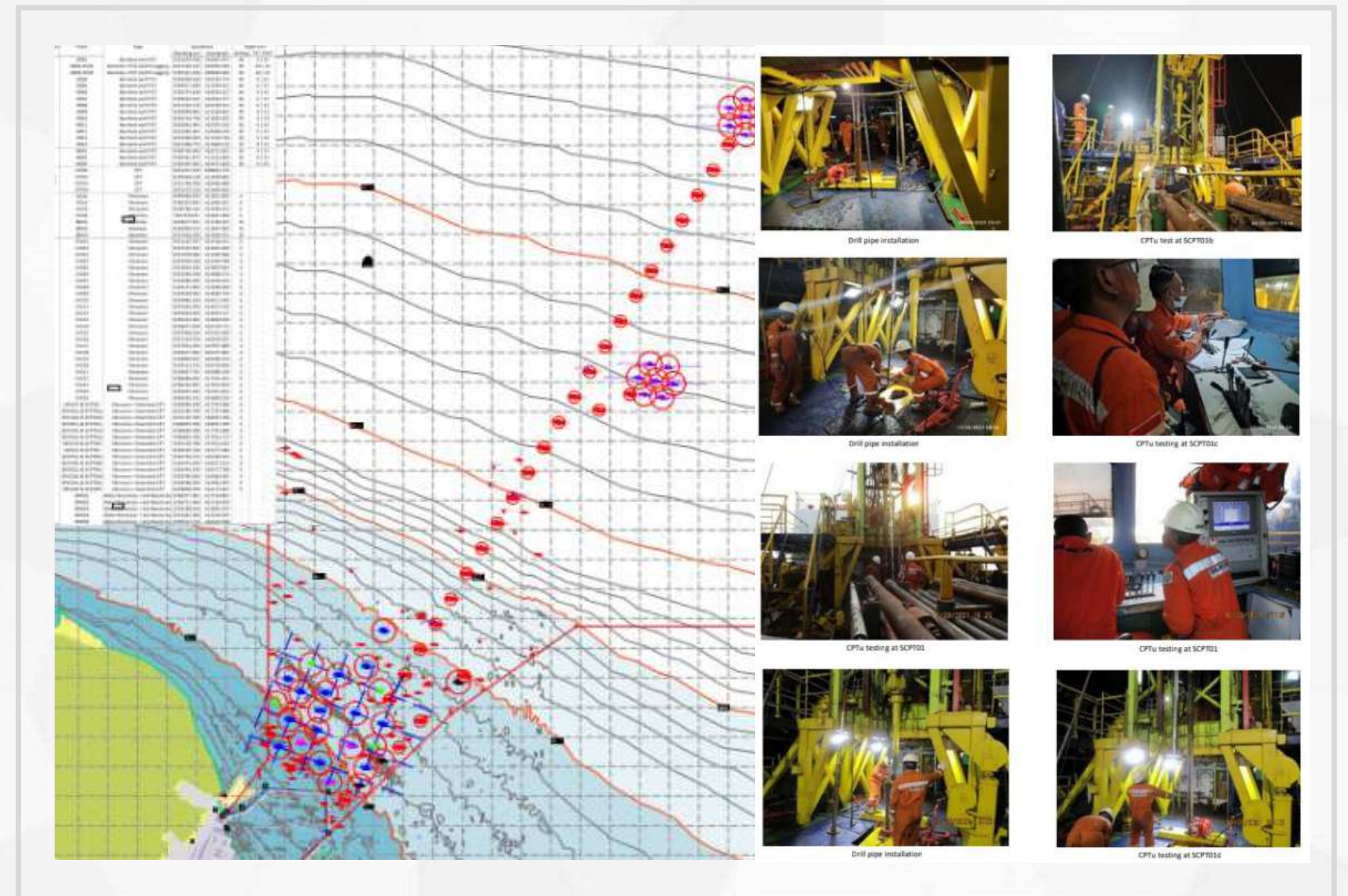


03 Engineering Projects

PROJECT CAPABILITY

Geotechnical & Geophysical

PT Haskoning Indonesia (RHDHV) plans to develop Marine Terminal and Offshore Facilities PT Pertamina Rosneft Pengolahan & Petrokimia in Tuban , East Java, Indonesia. PT Tectona Mitra Utama (TMU) has been contracted by RHDHV as client representative to supervise the Geotechnical Survey for Marine Terminal and Offshore Facilities.





An affiliated company of Tectona Mitra Utama (TMU), is committed to **revolutionizing the mining industry** by delivering **high-performance, reliable, and sustainable energy solutions** tailored for large-scale mining operations.



OUR FOCUS

in the Mining Industry:



► **Reliable Power Solutions**

Ensuring uninterrupted energy supply to maximize productivity and operational efficiency.

► **Sustainable Energy Integration**

Implementing cleaner, cost-efficient energy solutions to reduce environmental impact.

► **Customized Engineering Solutions**

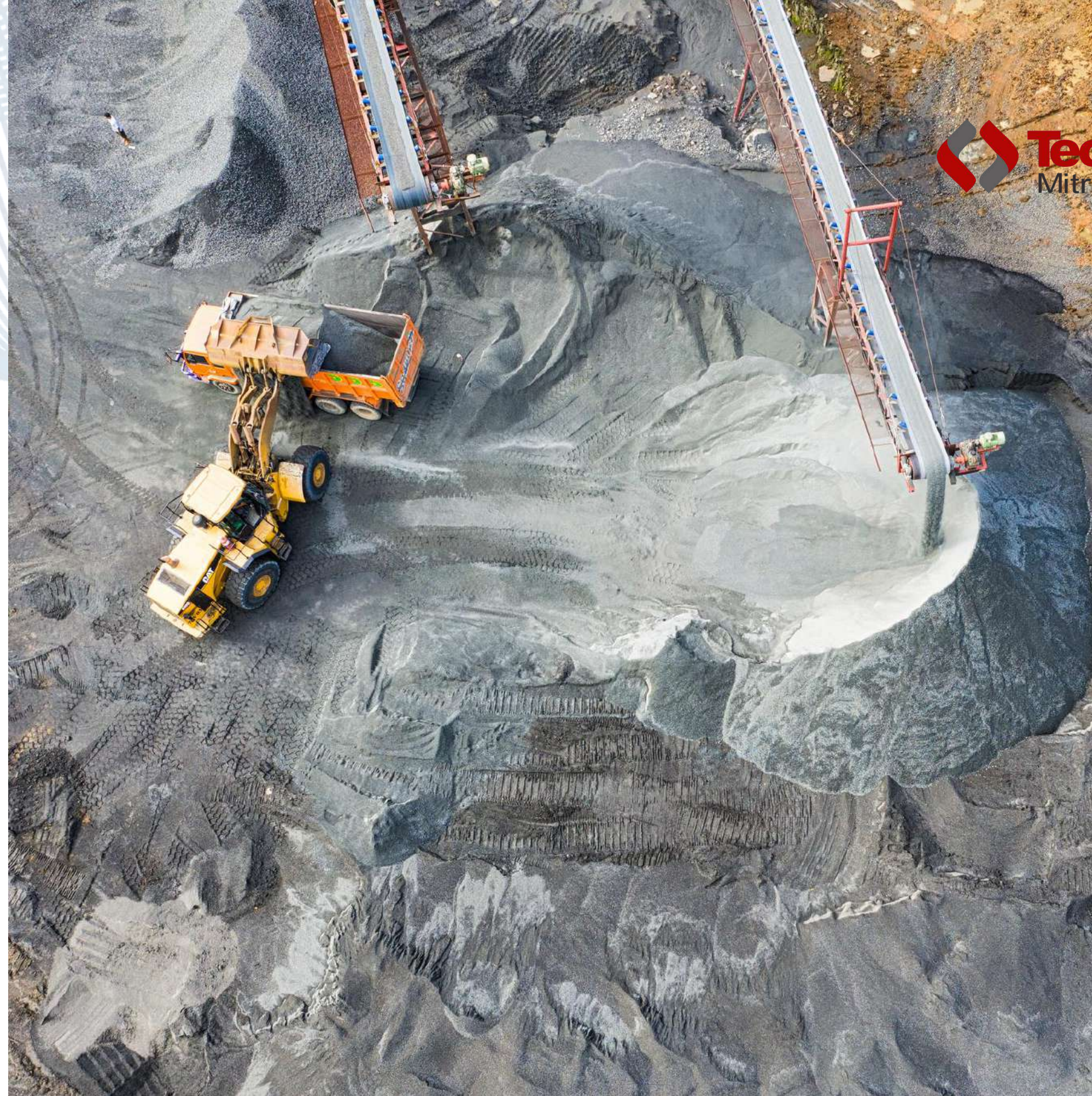
Developing tailored power infrastructure designed to meet the unique demands of mining projects.

► **Operational Excellence**

Leveraging cutting-edge technology and expertise to enhance safety, efficiency, and long-term sustainability.

OUR VISION

To be the leading private mining company, delivering sustainable value, excellent services, and products to customers in Indonesia and overseas.



OUR MISSION

1. Conducting business with good mining practices and good corporate governance to optimize current operations.
2. Ensuring sustainable profit growth to maximize shareholder value.
3. People are a valuable asset, fostered through continuous learning, digital innovation, and sustainable solutions across all operations.
4. Focusing on health and safety for our people while committing to sustainable efforts for the environment.
5. Enhancing social responsibility awareness in our operational areas.



Health, Safety and Environment

We prioritize the well-being of our employees, stakeholders, and the environment by ensuring safe and sustainable practices.

Honesty and Integrity

We uphold transparency, ethics, and accountability in all our actions and decisions.

People

We value and respect our people, fostering a culture of growth, inclusion, and empowerment.



Ownership

We take responsibility for our actions, striving for excellence and continuous improvement.

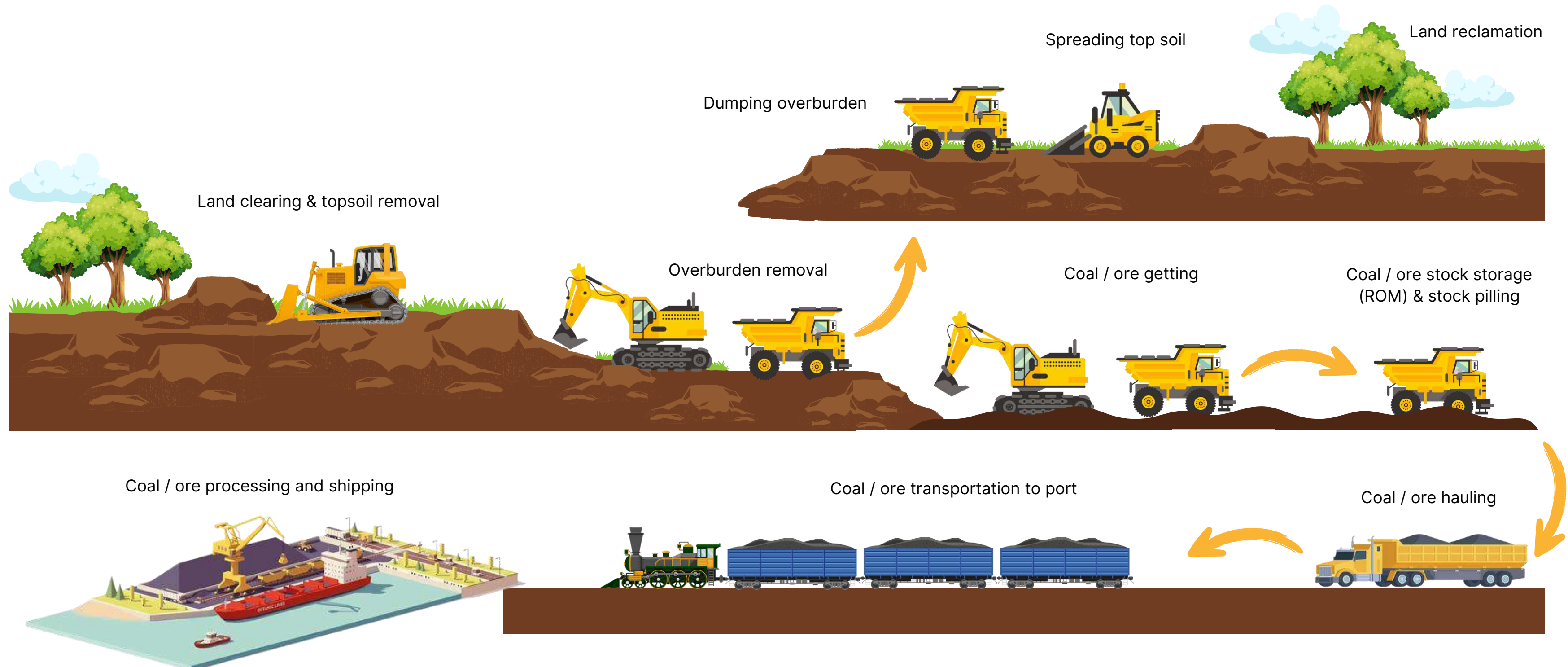
Sustainable and Innovation

We commit to sustainable growth by embracing innovation and forward-thinking solutions.

Teamwork

We believe in collaboration and synergy, working together to achieve shared success.

OUR SERVICE



OUR PORTFOLIO

Galian C



Galian C
Production
Capability



150.000 m³/annum



Overburden dan Coal Getting - site RKBM



Overburden

Production
Capability



3.000.000 BCM/annum



Coal Getting

Production
Capability



1.000.000 ton/annum

Hauling Service



Hauling
Production
Capability



1.000.000 ton/annum



TECTONA CARGO

Tectona Anugrah Pratama Cargo

PT TECTONA ANUGRAH PRATAMA CARGO

Company Profile



PT TECTONA ANUGRAH PRATAMA CARGO is a company engaged in general trading and services, with one of its core business activities being domestic courier and cargo shipping services.

Initially established as a legal entity under the status of a CV, **PT TECTONA ANUGRAH PRATAMA CARGO** was formally founded on January 9, 2023, through legal endorsement by Notary Hadijah, SH, M.Kn., located at Jl. HOS Cokroaminoto No. 81, Menteng, Central Jakarta. The business operates out of Kindo Square, located at Jl. Duren Tiga Raya No. 101, Block B8 (Basement Floor), South Jakarta.

Equipped with reliable transportation resources and an extensive network throughout Indonesia, along with support from shipping partners located in major cities across the country, **PT TECTONA ANUGRAH PRATAMA CARGO** has the capability to provide delivery services nationwide via land, sea, and air routes.



About Us

“

***Your Trusted
Logistics Solution***



Vision

Become 1st on delivery services in Indonesia with quality, responsible and reliable services.

Mission

Create modern infrastructure and improving company performance and service to all client to achieve customer satisfaction.





TECTONA CARGO

Tectona Anugrah Pratama Cargo

PROFESSIONAL

- Work according procedures
- Prioritize quality
- Complete work thoroughly and on target
- Accept feedback and suggestions for mutual improvement

COMMITMENT

- Keep promises to customers
- Complete orders according to quality standards and time
- Resolve customer complaints accurately and appropriately
- Actively collaborate as a good team



Core Value

SINCERE

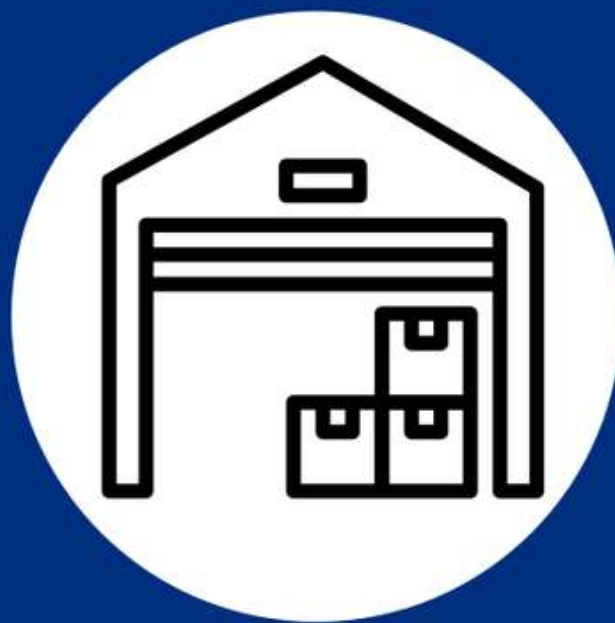
- The best greeting for customers
- Serve sincerely
- Priority serving to customers, colleagues and partners

RELIABLE

- Reliable
- Trusted
- Make standard operating procedures a part of the company culture



**CARGO
SERVICE**



**WAREHOUSE
MANAGEMENT**



**GENERAL
TRADING**

Shipper more than 30
Partners In Indonesia.



We have Corporate client
from Middle to Large
enterprises.

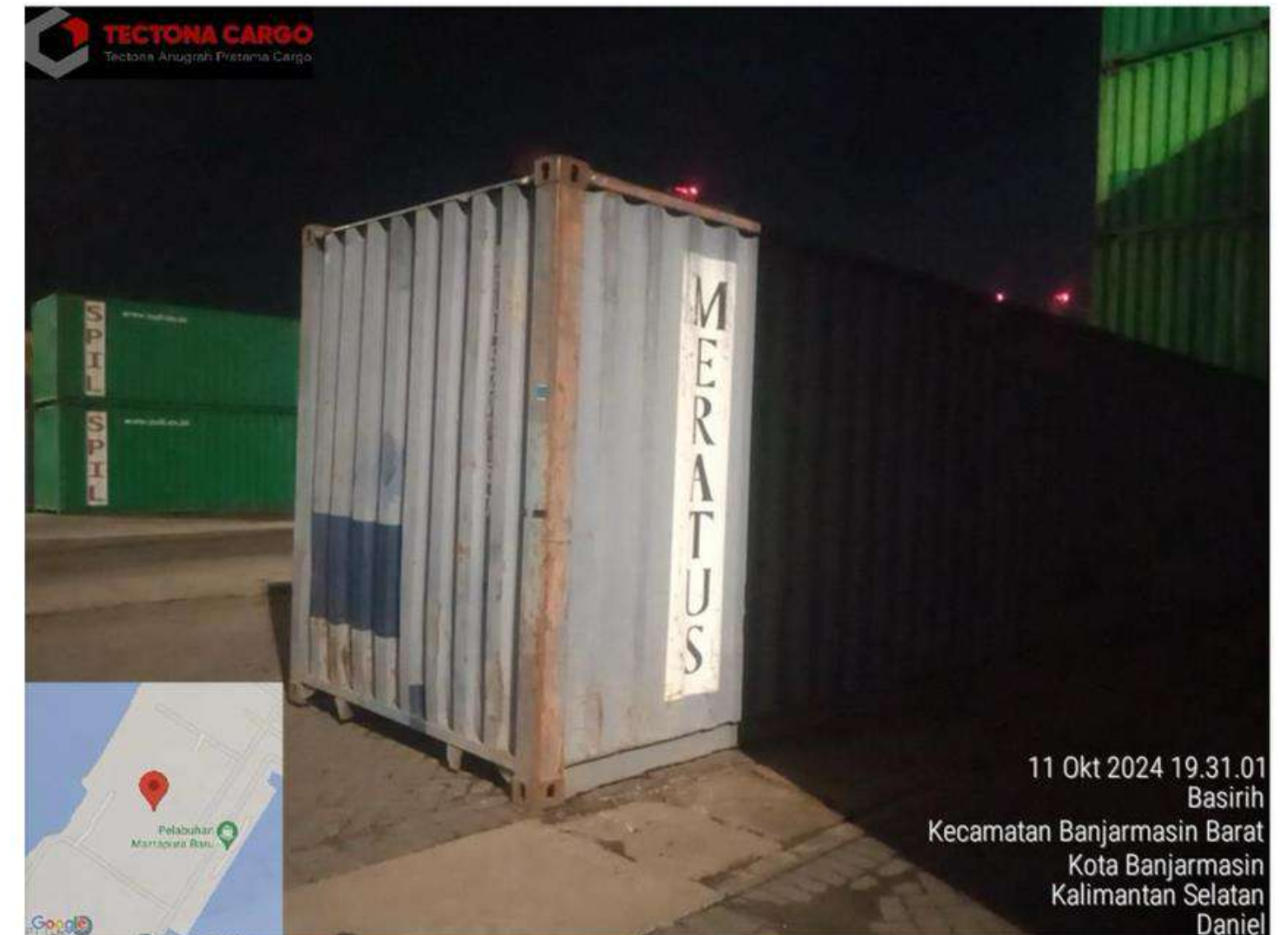


Transportation Types.

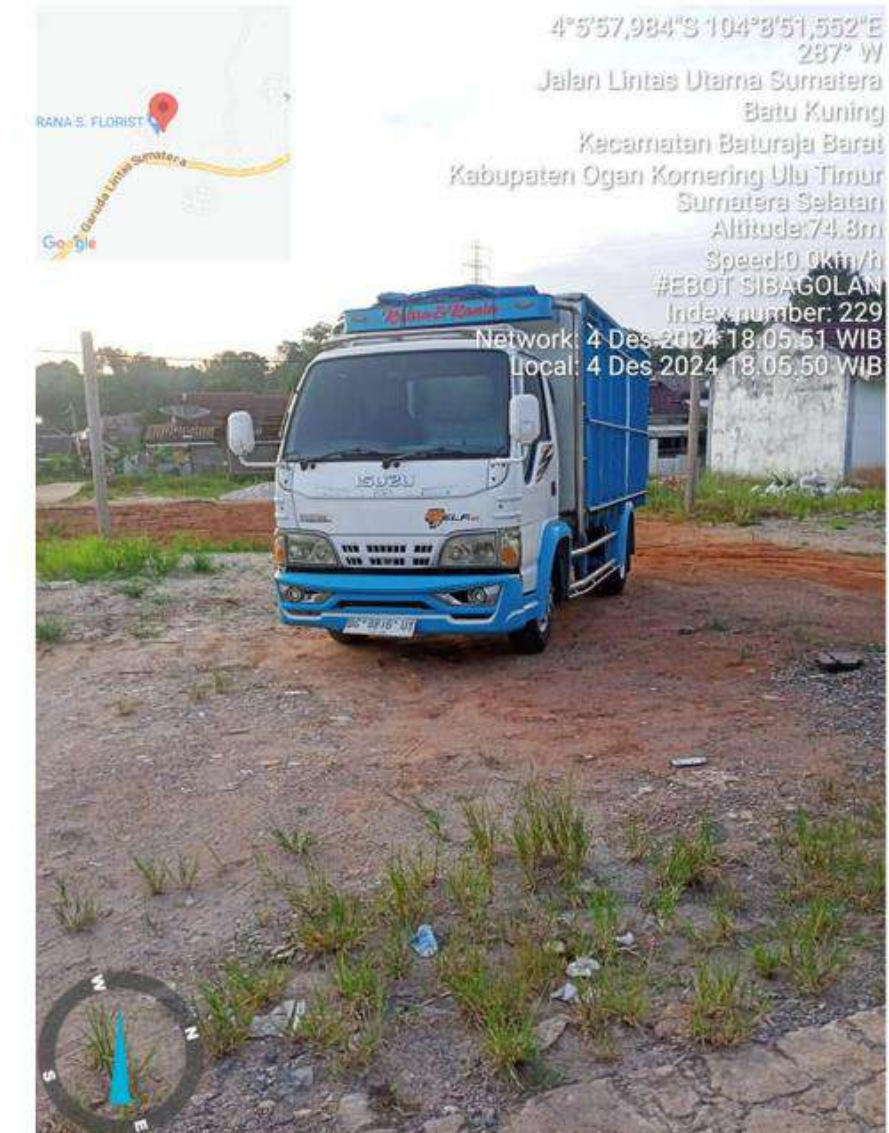
1. Motorcycle
2. Mini Blind Van
3. Light Truck
4. Truck
5. Container 20 & 40''
6. LCT







**Tectona Mitra Utama
(Bandung – Sebamban)**



Groundcheck Inti Indonesia (Jakarta – Muara Enim)



**Piwar Teknologi Indonesia
(Jakarta – Batam)**



**Warma Trierindo
(Bogor – Bintan)**

Contact Us



Menara Kuningan 3rd Floor unit L - M
Jl. HR Rasuna Said Blok X- 7 Kav 5,
Jakarta Selatan

Website : www.tectona.co.id
Email : info@tectona.co.id
Phone : 021 (298-806-92)

LinkedIn : Tectona Mitra Utama
Instagram : [@tectonamitrautama](https://www.instagram.com/tectonamitrautama)



Menara Kuningan 15th Floor unit D- E
Jl. HR Rasuna Said Blok X- 7 Kav 5, Jakarta
Selatan

Website : www.tectona.co.id
Email : info@tectona.co.id
Phone : 021 (298-806-92)
Phone : 022 (202-791-01)

LinkedIn : Tectona Mitra Utama
Instagram : [@tectonamitrautama](https://www.instagram.com/tectonamitrautama)



Menara Kuningan 15th Floor unit A
Jl. HR Rasuna Said Blok X- 7 Kav 5, Jakarta
Selatan

Website : www.tectona.co.id/tectona-baratama-energi
Email : info@tectonabaratama.co.id

LinkedIn : Tectona Baratama Energi



Menara Kuningan 12nd Floor unit H
Jl. HR Rasuna Said Blok X- 7 Kav 5, Jakarta Selatan

Website : www.tectona.co.id/tectona-cargo
Email : info@tectonacargo.co.id
Phone : 0822-6061-0066

LinkedIn : Tectona Anugerah Pratama Cargo
Instagram : [@tectonacargo](https://www.instagram.com/tectonacargo)